



The European University of Post-Industrial Cities

*Towards a collaborative approach and structure for engaged research
(UNIC4ER)*

D2.4 - A UNIC4ER Engaged Research Strategy





The European University of Post-Industrial Cities Towards a collaborative approach and structure for engaged research (UNIC4ER)

Deliverable number:	D2.4
Deliverable title:	A UNIC4ER Engaged Research Strategy
Due date:	M10 - Extended
Work package number:	WP 2
Work package leader:	University College Cork
Dissemination type:	R
Dissemination level:	PU
Author(s):	Dr David O’Connell (UCC Co-PI), Dr Martin Galvin (UCC Co-PI), Dr John Barimo (UNIC Engaged Research Officer), UNIC4ER Taskforce Members

Disclaimer: The content of this publication represents the views of the author only and is his/her sole responsibility. The European Commission's support for the production of this publication does not constitute an endorsement of the contents, which reflect the views only of the authors, and the Commission cannot be held responsible for any use which may be made of the information contained therein.

Table of Contents

1.0 Introduction	7
1.1 Overview of the UNIC European City of Post-Industrial Cities	7
1.2 Overview of UNIC4ER	8
1.3 UNIC4ER Learnings and Rationale for Further Development.....	9
2.0 Intended Outcomes	16
2.1 Outcomes.....	16
2.2 Long-Term Outcomes	17
2.3 Impact (Legacy Outcomes)	17
3.0 Activities	18
3.1 Logic Model.....	18
3.2 Overview.....	20
3.3 Urban Institute (PITA)	21
3.3 Engaged Research Transformation for Impact Fund	22
3.5 Technical Support & Expertise.....	23
3.7 Embed Engaged Research in Policy.....	25
3.8 Strengthening the Research Process & Integrate ER within Curricula and Professional Development	27
4.0 Communications	29
4.1 Current Capacity.....	29
4.2 Targeting Key Stakeholders	30
4.3 Policy Liaison.....	30
5.0 Evaluation and Dissemination	31
5.1 Evaluation	31

6.0 Budget and Resource Use	32
7.0 Governance, Management and Operations	33
Appendix A	35
A.1 UNIC Consortium Partners	35
A.2 THE 10 UNIC Cities	36
Appendix B.....	38
B.1 The Meta Framework to Focus and Group Activities	38
Appendix C.....	40
C.1 Strategy Forum Introduction	40
C.2 Event Programme	41
Appendix D	62
D.1 Posters detailing societal challenges of each UNIC city-university pair.....	62
Appendix E.....	78
E.1 The European Declaration of Engaged Research	78

Executive Summary

This is an interim document, a draft of a long-term strategy for embedding research within the operations of UNIC, with an intentional focus on Engaged Research. The Strategy is not due until Month 36 of the current SWAFS Grant Cycle. However, UNIC will be submitting a second-round application in 2023 for Erasmus+ continuation funding, Hence the importance of an early strategy for UNIC4ER, in order to influence thinking based on the experience of operating the current programme. In a short time, much has been achieved, including the launching of a European Declaration on Engaged Research in Oulu in June (Fig. 1), firmly claiming UNIC's place as a beacon and leader within the European Research Area, particularly around research co-creation with societal partners and blazing a trail in this regard for others to follow.

The following document begins by setting the context, explaining what UNIC is and outlining the goals and ambitions of UNIC4ER. It then sets out the learning from the current phase of UNIC4ER and the policy context that it operates within. Following this it outlines clear short-term, long-term and legacy outcomes that the programme hopes to achieve over the next 5 years and beyond. This specific commitment to achieving impact and making a measurable difference underpins everything UNIC4ER is about. All of its activities are detailed in a comprehensive Logic Model which will form the basis for an external evaluation going forward.

The activities planned are ambitious, grounded in prior learning, they set out a radical vision to accelerate Engaged Research within and across the participating institutions and cities, and establish UNIC as a centre of excellence for ER in Europe and beyond. For UNIC, ER is an intrinsic enabler of research that is transdisciplinary and advances progress on collectively addressing societal challenges with external partners, including them as key contributors to the research cycle.

Inevitably the ambition outlined requires a focus on investment and developing the necessary human capital to strengthen the research process and bring it to a state-of-the-art level, it requires good governance and management to enable and guide planning and implementation on the ground. It requires the best international advice to ensure UNIC4ER is positioned as the leading centre of its kind in Europe.

We look forward to advancing, refining and implementing the strategy over the next number of years, most pertinently in Rotterdam in October 2022, where there will be an opportunity to workshop what is written and presented in this document and move toward an agreed final draft.



Fig. 1. Ceremonial signing of the European Declaration on Engaged Research with City and University representatives from across the UNIC the European University of Post-Industrial Cities. In the joint declaration they commit to develop a common approach to engage citizens, communities and their cities in promoting research and innovation. This declaration is part of the UNIC4ER (UNIC for Engaged Research) project funded by the European Commission.

Mayor of Liège, Willy Demeyer at the signing of the European Declaration on Engaged Research:

“This Declaration is an important milestone for cities and universities in Europe. It is the first time that as a group we have developed such a joined up commitment to our communities. This historic initiative will have relevance, resonance and impact across Europe for many years to come.”

1.0 Introduction

1.1 Overview of the UNIC European City of Post-Industrial Cities

UNIC is an alliance of eight universities and cities, which aims to develop a new model of European inter-institutional teaching and research infrastructure built upon interrogating and addressing the issues facing post-industrial cities, particularly issues of inclusion and diversity. UNIC has a distinct focus on engaged research, which builds upon our strategic advantage as an alliance of research-intensive universities and city partners with experience in issues of post-industrial transitions and collaboration with society. The UNIC universities and the post-industrial cities are facing unique challenges and opportunities as their regions transition from a manufacturing economy to a service-based economy. In response, the UNIC Alliance pools expertise to broaden the means to overcome the challenges created by post-industrialism.

UNIC includes the following collaborative structures:

1. The UNIC Governance Structure involves each partner university in a step-by-step approach to ensure systemic convergence of operations and an ever-closer integration of universities within UNIC.
2. The UNIC Inter-University Campus is integrating virtual and blended mobility into UNIC academic and campus life, using an innovative, differentiated approach to widen physical mobility and integrate virtual mobility in blended formats in existing and new curricula.
3. The UNIC Superdiversity Academy is developing best practice in working with superdiversity in UNIC and disseminate it for universities throughout Europe. Research on superdiversity and integration is on the agenda of each of the UNIC partners who are all members of the European Network of Excellence “International Migration, Integration and Social Cohesion.
4. UNIC CityLabs are developing two types of CityLabs: physical pop-up locations and virtual meeting platforms. Both are connected to each participating post-industrial city, and offer a space where students, staff and the community can meet as partners to address the complex challenges of post-industrial transitions. The underlying impact-by-design methodology ensures social impact from research through a quintuple helix model of industry-government-university-societal-environmental interactions. It confronts students with new societal challenges in local and international context and teaches them to use new hybrid forms of knowledge to generate innovative solutions.

1.2 Overview of UNIC4ER

UNIC for Engaged Research (UNIC4ER) aims to develop a common framework and supportive systems for involving and engaging citizens, civil society, public & city authorities and academia in joint research and innovation initiatives. Engaged research offers a trans-disciplinary approach and method for systematic knowledge production inclusive with and within society. It offers an approach for combining excellence with relevance and an innovative way to understand today's societal challenges by engaging with societal actors and communities directly involved in such challenges. Engaged research methods require a process of boundary crossing where academia steps outside its customary domains to co-create with citizens and community.

As such Engaged Research provides a unique opportunity for a European University seeking to develop a better understanding of today's post-industrial challenges, including those related to inclusion and diversity. Its approaches, as exemplified in community-based research and design methods, have been at the forefront in highlighting the existence of tensions and disconnects between lay and expert knowledge systems. These approaches have enacted a cultural step change in postmodern epistemology, where expertise is not a vertical top-down process of knowledge transfer, but a horizontal and collective process in which contrasting rationalities work together

Through this programme, UNIC's partners strive to mainstream engaged research to facilitate effective community-university partnerships by developing new infrastructure and processes within the university, including:

- Shared understandings of what we mean by engaged research, agreed guidelines for good practice, and UNIC wide agreed indicators to measure impact;
- Resources/databases of examples and best practice exemplars of engaged research so this work is visible and accessible;
- Institutional infrastructures and resources to facilitate engaged research, which are linked to all colleges and disciplines within the institution, rather than being siloed in one discipline, department or college;
- Commitment to embed engaged research in undergraduate, postgraduate and doctoral training as a means of building future research capacity.

1.2.1 KEY ACHIEVEMENTS TO DATE

The UNIC4ER project has produced considerable results in its first 10 months of operations with efforts being coordinated through the UNIC4ER Taskforce and at times in collaboration with UNIC

CityLabs. The following highlights significant accomplishments which are primarily task deliverables for the Horizon Europe funded project:

- Launch of UNIC4ER in October 2021
- Task 1.1: Incorporating the UNIC4ER Engaged Research Dimension into the overall management structure of UNIC
- Task 1.2: Developing an Engaged Research approach towards ethics and data management.
- Task 1.3: Adding specific roles and structures to the UNIC management structure for the coordination and monitoring of tasks and deliverables from this proposal
- Task 2.1: Establish a UNIC4ER Engaged Research Strategy Forum
- Task 2.2: Map current institutional practices, policies and initiatives supporting engaged research within the UNIC partner universities
- Task 2.3 Develop a common understanding of engaged research
- Task 2.5: Develop and sign a Common Declaration on Engaged Research
- Task 3.1: Inventory of research excellence on engaged research within and beyond UNIC
- Task 4.1: Review of existing co-creation structures and practices for engaged research between cities and universities
- Task 6.1: Quantifying input, output and outcomes of all UNIC4ER's efforts
- UNIC4ER participation in the UNIC CityLabs Festival in Oulu, Finland in June of 2022

1.3 UNIC4ER Learnings and Rationale for Further Development

1.3.1 BASELINE NEEDS ASSESSMENT

UNIC4ER developed a Meta Framework structure to categorise and assess baseline functions across the UNIC consortium with regards to operational capacities for engaged research within and amongst consortium partners during recent mapping activities. The Meta Framework contains eight domains which are depicted in Fig. 2 below and they provide a window of understanding into the collective challenges of UNIC4ER to develop a culture of excellence in engaged research (see Appendix B for details).

Meta-Framework for Mapping Engaged Research Dimensions

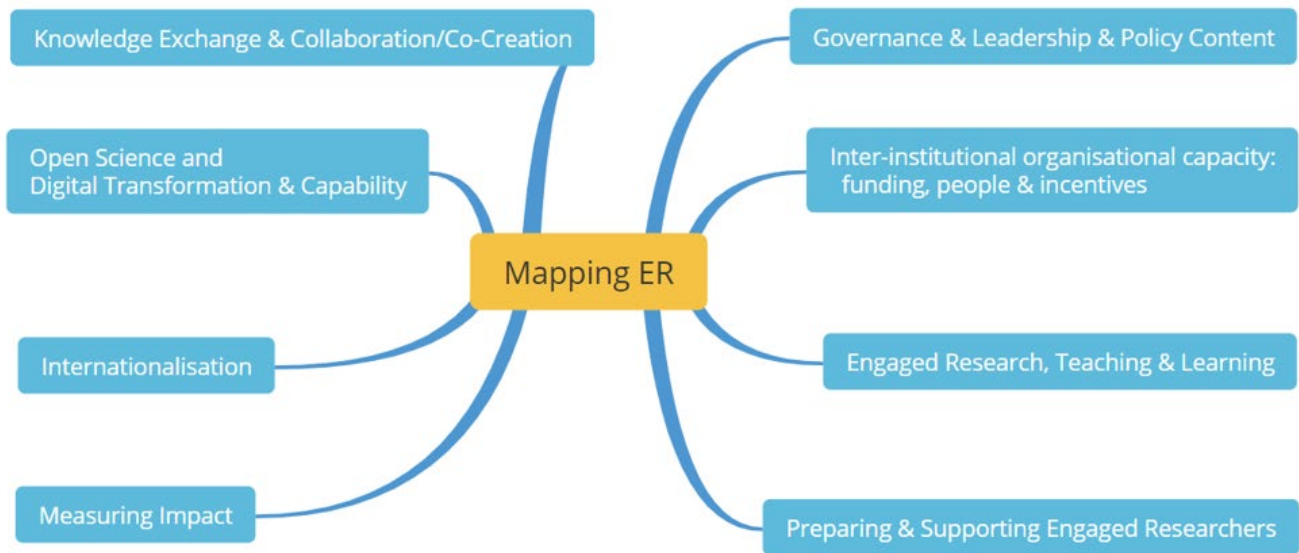


Figure 2. The following graphic depicts the UNIC4ER mapping meta-framework which was refined during the mapping workshop at the UNIC4ER Strategy Forum.

1.3.2 LEARNING FROM BASELINE MAPPING AND NEEDS ANALYSIS

The various mapping exercises conducted as UNIC4ER deliverables identified a number of institutional and inter-institutional strengths as well as gaps and challenges. The following points highlights key findings of this work:

- One issue that is clear from the baseline analysis mapping exercise is that there is a need for a Knowledge Management plan and a more systematic approach to knowing what the current engaged research activity is. Currently, it is difficult to get a line of sight on ER activity within and across systems – between different institutions, different disciplines, and different supports, projects and programmes.
- The potential for engaged research and for the societal impact of UNIC research is severely constrained without a collective interface between city and university to identify research need and streamline a focus on research priorities.
- Funding calls play a central role in deciding on what research gets prioritized and funded. Dedicated funding for ER and trans-disciplinarity requires a shift in thinking away from a

discipline-driven funding systems, which is an important part of the overall process of change to enable engaged research.

- There is an important role for philanthropic research funding as an integral part of UNIC, which also needs to be considered, given its mission and focus on cities, diversity and inclusion.
- Resources needed are financial support for capacity building e.g., to help bring guidance and assistance on societal partnership development for engaged research, or to support professional development for researchers, or to incentivize integration of ER within curriculum, etc.
- There are important actions to be taken at the individual institutional level regarding the professional formation of academics. While some universities have explicitly recognized community engagement and societal contribution in their promotion criteria and awards systems, others have not. A clear articulation of the importance of the societal connect is an essential starting point, and creating a specific space within Researcher Career Frameworks, and support on an ongoing basis through hiring, induction, coaching, mentoring supports, and professional development offered to academics would help to deepen and develop the relevant skills for engaging with society.
- There is strong potential for UNIC, to be the place in Europe for ER that influences and shapes EU Urban policy. Horizon Europe Research and Innovation policies across Europe, including the Green Deal, actively promote and support engaged research and innovation for policy and practice change. Producing rigorous scientific engaged research evidence to inform EU and governments policy and practice, builds trust with diverse local and national communities and stakeholders, facilitates participation of traditionally under-represented, or marginalised groups in policy research, design and implementation, and results in better implementation, support and impact of public policies.
- There are enormous potential benefits to the UNIC approach of building relationships and working together to strengthen the overall engaged research base, in order to identify and address shared European societal challenges and issues. Our goal should be to maximise the impact of UNIC research in a wider European and global setting.
 - The establishment of the Universities Policy Engagement Network (UPEN) in the UK brings 60 member universities together to make it easier for civil society and policymakers to draw on its research to improve policy. UNIC is well positioned to do the same, through establishing a Centre of Excellence for Urban Research.
 - Contemporary societal challenge-based frameworks such as the Urban Agenda for the EU, demonstrate the need for research that involves beneficiaries from the very beginning to realise societal transformation, which is UNICs USP. This co-design (top-down & bottom-up) approach at the heart of UNIC and UNIC4ER not only maximizes opportunity for increased human capabilities, new or improved public policy, services,

-
- and products, it addresses the societal participation needed to engender research informed policy and practices - that will address urban challenges.
- For UNIC, it is important to envision engaged research and its role as central to an agenda emerging in relation to interdisciplinary and transdisciplinary research. A recent paper from the OECD, [Addressing Societal Challenges Using Transdisciplinary Research](#), makes an important contribution to this debate. The OECD notes that there are a number of societal challenges, often involving complex systems, that are not fully understood and for which solutions are urgently required. The impacts of global warming, biodiversity loss, natural disasters, economic migration and health pandemics require both technological and social innovations. OECD concludes that ‘In order to achieve this, different scientific disciplines, including natural and social sciences and humanities need to work together and with society across the quadruple helix, to fully engage citizens, public sector actors, including policymakers, and the private sector’. In its view solutions cannot to be generated based solely on disciplinary research but require a paradigm shift to trans-disciplinary engaged research practice.

In summary, much more connective tissue is required. Engaged research is a complex agenda in a complex landscape. It is clear that making progress requires concerted action on the part of a number of actors, specifically the universities, but also in tandem with our cities, civil society, national and EU actors, and funders; each group needs to better understand the domain of the other. We are at a starting point, but there is a need to engender a structural dialogue. That is, to make progress on a meaningful engaged research agenda, action needs to be initiated, in these distinct but overlapping and interrelated spaces: in the research community itself, within local, national and EU government, civil society, and in the research funding agencies. We must grow and design the connective tissue which enables them to come together to engage positively with UNIC European University engaged research ambition and mission into the future.

1.3.1 REVIEW OF POLICY CONTEXT AND POLICY RATIONALE FOR UNIC4ER

- UNIC4ER aligns with the key EU Policy document shaping the future of the European Research Area (ERA), [A Pact on Research and Innovation in Europe](#). And further, the common European values and principles for research and innovation expressed within the Pact, especially with regards increasing society’s participation in the ERA with active citizen and societal engagement in all dimensions of research and innovation which is a guiding principle of engaged research. This ideal is also echoed in the [Strategic Innovation Agenda of the European Institute of Innovation and Technology \(EIT\) 2021-2027](#) with an explicit call for engagement with local stakeholders and civil society.

-
- The work of UNIC4ER also aligns with the Horizon 2020 Science with and for Society programme (SWAFS) focus on addressing European societal challenges through research co-creation across all disciplines. This allows all societal actors including researchers, citizens, policy makers, business, civic and civil society organisations to work together during the whole research and innovation process. The Quintuple Helix collaboration helps to align both the process and its outcomes with the values, needs and expectations of European society.
 - The [Horizon Europe Programme Guide, 2021- 2027](#) also calls for social innovation concerns the development of new products, methods, and services for and with society involving the Quadruple Helix in their design, development, and implementation. Further, the [Horizon Europe Strategic Plan](#) states that researchers must provide “clear and succinct information on how citizens, civil society, and end user engagement will be implemented within the project.” This strategy recognises this may include co-design activities; co-creation activities; co-assessment activities; and engagement through methodological approaches. Additionally, researchers must be able to articulate how the project contributes to the outcomes of specific calls, and how it is linked to wider impacts.
 - According to the [Horizon EUROPE Glossary](#), *impact may be broadly defined as a change or a benefit to the economy, society, culture, public policy or services, health, the environment or quality of life.* The European Commission’s Horizon Europe Intervention Logic distinguishes between three types of expected impacts – scientific, innovation/economic and societal which are expressed in Fig. 3 to included nine Key Impact Pathways (KIPs). These nine KIPs of Horizon Europe and associated storylines as expressed by the [European Innovation Council](#) offer time-sensitive indicators and data needs for measuring scientific, societal and economic impact in the short, medium and long-term and many of which can have a direct positive impact on advancement of the U.N. Sustainable Development Goals.

Quick Introduction – The 9 KIPs

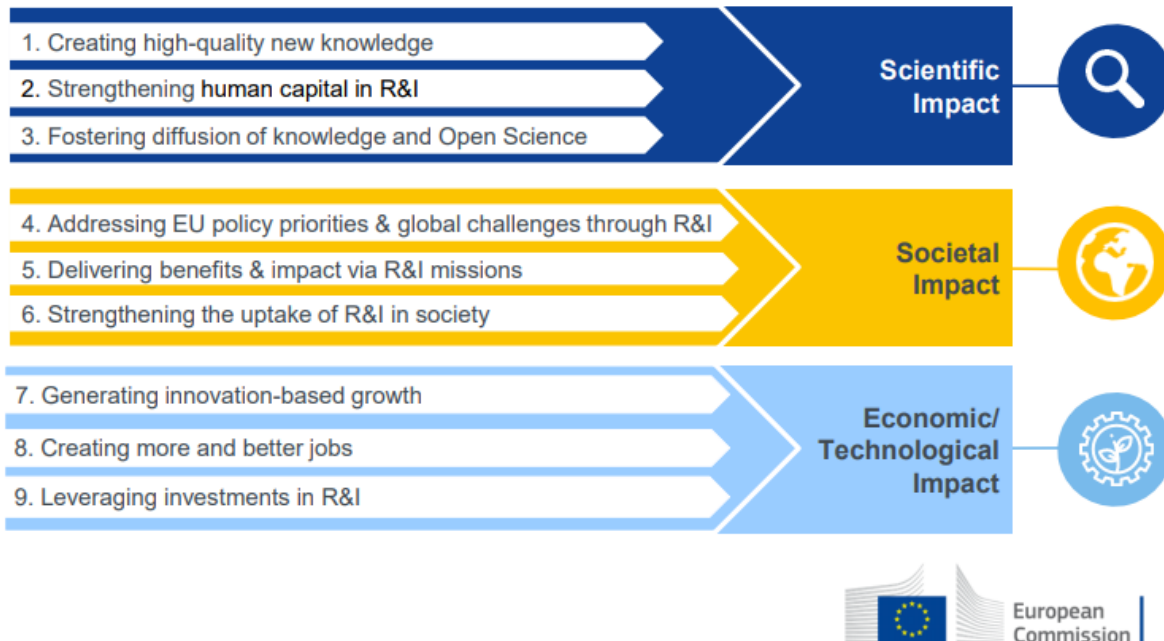


Figure 3. Nine Key Impact Pathways of Horizon Europe. Source: Bruno, N. & Kadunc, M. (2019).

- Open Science and the transfer of knowledge is a key feature of the UNIC4ER project which facilitates effective collaboration within the Quintuple Helix framework. This also aligns with [European Commission](#) ambitions considering Open Science to allow for better science through open and collaborative ways of producing and sharing knowledge and data, as early as possible in the research process, and for communicating and sharing results.
- UNIC4ER is also committed to the [EU Mission of 100 Climate-Neutral Cities by 2030](#) as 6 of the 10 UNIC partners which includes the two new consortium partners of Malmö University, Sweden and the University of Lodz, Poland. The [Horizon Europe missions](#) offer a new way to bring a focused approach and concrete solutions for some of our greatest societal challenges. They have ambitious goals and will deliver concrete results by 2030. The EU Missions aim to deliver impact by putting research and innovation potential into a new role, combined with new forms of governance and collaboration, as well as by engaging citizens. To effectively realise these aspirations, it is essential to reconnect with the environmental dimension of our societies which is expressed in the Quintuple Helix model which expands the

Quadruple Helix to include environment along with academia, government, business and societal partners.

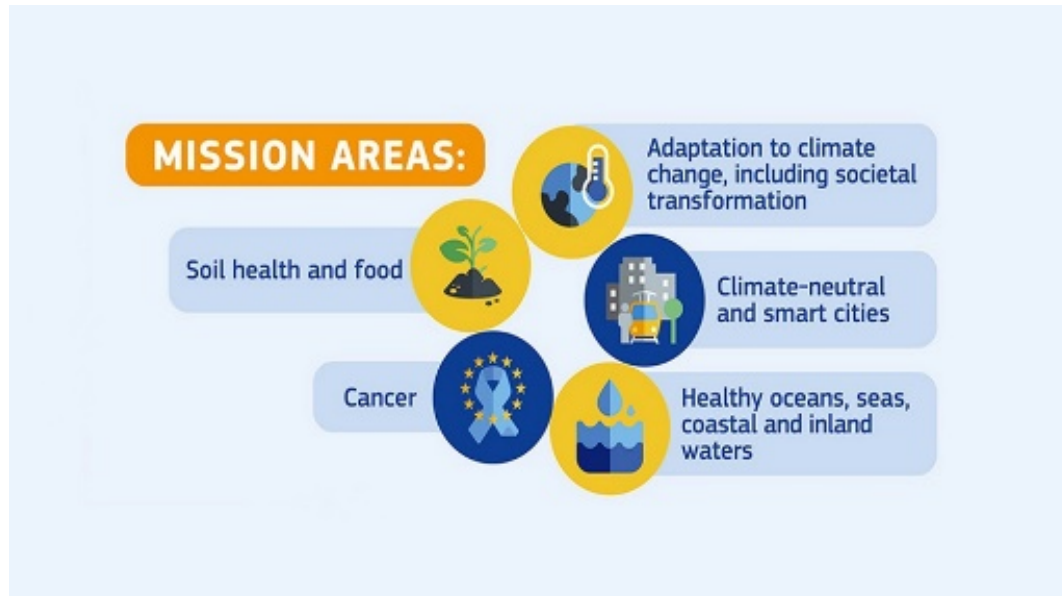


Figure 2 The five mission areas of Horizon Europe addressing some of our most critical challenges.

Source: [Horizon Europe missions](#)

- The European Commission’s [A European Strategy for Universities](#) encourage ‘green villages’ as a way to open up university campuses to communities, to bring science closer to citizens, with the support of Horizon Europe, including its missions. It also calls for the creation of Living Labs in universities that enable students, staff and researchers to cooperate with other key stakeholders to solve societal challenges and encourages application of knowledge to the real-world context, enhances skills of those involved, increases connections between people, and provides more opportunities to connect with society. The UNIC CityLabs are a way of delivering Living Labs and are well aligned with this policy.
- The involvement and commitment of the public and of all stakeholders is crucial to the success of the [European Green Deal](#). It recognises that citizens are and should remain a driving force of the transition and that a new pact is needed to bring together citizens in all their diversity, with national, regional, local authorities, civil society and industry working closely with the EU’s institutions and consultative bodies.

-
- It has been expressed that innovation can be defined by its social objectives to improve the welfare of individuals or communities ([OSLO Manual, 2018](#)) which is best exemplified by the work of the Horizon Europe Missions. And the principles and ideals of engaged research were captured in a statement during the [Horizon Europe Work Programme 2021-2022 on Health](#) which states even though research and innovation has the power to uncovering the knowledge and developing the technologies to serve societal well-being, economic prosperity and environmental sustainability, it only can succeed through cooperation of the best research teams with the prospective users of such knowledge and technologies.

2.0 Intended Outcomes

2.1 Outcomes

Given the learning and policy context above, going forward UNIC4ER will orient its activities around the following outcomes for impact,

Short-Term Outcomes

- More effective city and university research collaboration and impactful multi-city external research funding initiatives.
- Presidents/Rectors and City CEOs championing the Engaged Research Declaration across EU and to non-aligned post-industrial cities.
- Engaged Research mainstreamed within mission, policies & practices of each institution, realizing the European Research Area and 'Pact for Research and Innovation in Europe'.
- Strong citizen, CSO/NGO participation in research via Engaged Research Cycle.
- Successful elaboration of seed funded initiatives, such as Horizon Europe and other external funding applications.
- Engaged Research integrated within all UNIC PG Masters/PhD programmes.
- Support to non-traditional researchers and non-traditional Engaged Research methodologies.
- Curricula integration of Engaged Research and advancement of research-based teaching e.g., European Science Shop model integrated within the UG curriculum.
- Baseline Mapping and a Common Understanding of Engaged Research achieved.
- Measurable impact of UNIC4ER demonstrated on a formative and summative basis.

2.2 Long-Term Outcomes

- Strategic and coordinated approach to Engaged Research with cities evolving
- UNIC European Declaration of Engaged Research established as a European-wide model of best practice and a key policy advocacy tool.
- Engaged Research established as a key contributor in addressing key regional and societal challenges, e.g. as a key enabler of the EU Climate Neutral and Smart Cities, Arts & Culture, etc.
- City research challenges addressed in collaboration with citizens and societal partners & democratic competencies developed through engagement in the research cycle.
- Successful conversion of seed funded projects into Horizon Europe and other external funding applications.
- Strong institutional identity and culture of Engaged Research developing
- Researcher and institutional capacity for Engaged Research increased.
- Increased profile of Engaged Research within the European Policy context
- Strategic use of UNIC4ER investment demonstrated and disseminated

2.3 Impact (Legacy Outcomes)

- UNIC Urban Institute established as a European Centre of Excellence for Engaged Research and a demonstration site on addressing urban challenges & Post-Industrial Transitions and interdisciplinary and transdisciplinary connections between economy, society, ecology and culture.
- Strong research interface between cities and universities established with increased capacity of cities to respond to societal challenges and SDGs.
- Measurable impact on key EU Urban Agenda priorities and SDGs.
- A culture of Engaged Research embedded within the mission and operations of UNIC participating cities and universities

-
- Students are prepared to contribute fully to society as reflexive and civically engaged citizen leaders.
 - Increased democratic competencies through participation of citizens and public sector partners in co-creating research.
 - Increased citizen and community engagement in research co-creation that addresses the SDGs - 'emplacing' research in local contexts, with 'deep engagement' over time developing agentic communities.

3.0 Activities

3.1 Logic Model

UNIC4ER Activities and their intended impacts are outlined in the LOGIC MODEL attached below. Recognizing that impact assessment is challenging for short duration projects, especially when related to institutional change, the LOGIC MODEL supports HEI capacity to conduct impact evaluation post the first funding cycle of the UNIC4ER project. It is underpinned by a Theory of Change informed by the mapping and learning from the first iteration of UNIC4ER. Visioning exercises, as part of the UNIC4ER Strategy Forum, helped to set goals and envision desired impacts (what will change and why) with the key stakeholders of UNIC4ER. An intervention logic model, connecting inputs-outputs-outcomes-impacts (I-O-O-I), will be used to facilitate ongoing formative and summative assessment while recognizing that: 1) all impacts are not measurable, 2) that inputs are often not linear, and 3) there are complex interacting links between I-O-O-I.

UNIC4ER LOGIC MODEL

Inputs	Activities	Outputs	Short-Term Outcomes (until 2024)	Long-term Outcomes (2024-2027)	Impacts
<p><i>Governance</i></p> <ul style="list-style-type: none"> ◆ Board of Directors ◆ Executive Team ◆ Operational Team ◆ International Advisory Group <p><i>Core Funding</i></p> <ul style="list-style-type: none"> ◆ Horizon SWAFS ◆ Leverage funding from national governments ◆ Indirect costs from joint research bids ◆ Philanthropy ◆ Industry & enterprise <p><i>Strategic Partnerships</i></p> <ul style="list-style-type: none"> ◆ Living Knowledge Network, IMISCOE, URBACT, DG Regio, DG R&I, Eurofound, EU Climate Neutral & Smart Cities <p><i>Delivery Partners</i></p> <ul style="list-style-type: none"> ◆ Municipalities ◆ City stakeholders ◆ Regional NGO/CSOs ◆ Citizen <p><i>Communications</i></p> <ul style="list-style-type: none"> ◆ Dissemination support, technology development & comms support staff 	<ul style="list-style-type: none"> ◆ Establish an Urban Institute of Post-Industrial Transitions (PITA). ◆ Develop a Living Lab as a common interface with cities underpinned by research roadmaps with quintuple helix approach & collaborative funding applications. ◆ Establish an ER Transformation Fund ◆ Evidence for Public Policy: Embed Engaged Research (ER) in policy locally, nationally and internationally ◆ Technical Support to cities and universities around LL & joint funding bids. ◆ Community of Practice to support peer knowledge sharing and mentorship. ◆ Research Process & Integrate ER within curricula & professional development ◆ Baseline analysis (meta framework), monitoring and evaluation of UNIC4ER outputs, and impact captured & disseminated 	<ul style="list-style-type: none"> ◆ A virtual/ horizontal institute progressing transdisciplinary engaged research on post-industrial transitions. ◆ CityLabs, UNIC4ER, SD Academy integrated and re-positioned within the Urban Institute. ◆ Common UNIC wide city/university RDI Roadmaps and joint external research funding bids. ◆ Sustainable evidence informed Transformation Fund for ER governed by transparent criteria, protocols & professional advisement and management. ◆ UNIC promoting ER as a core aspect of public policy within universities, cities, national & E.U governments and agencies. ◆ ER integrated in academic promotions, professional development, recruitment, and staff retention policies. ◆ Joint 10 Masters programme in ER. Marie Currie PhD ER training programme. ER integrated within all UNIC Joint 10 and bilateral UG/PG programmes. Micro credentials established. ◆ Annual report, formative & summative evaluation, case study, publication and policy briefs. 	<ul style="list-style-type: none"> ◆ More effective and impactful city and university research collaboration. ◆ Impactful multi-city collaborative research initiatives established ◆ Presidents /Rectors and City CEOs championing the declaration across EU and to non-aligned post-industrial cities. ◆ Engaged Research (ER) mainstreamed within mission, policies & practices of each institution and European Research Area and ‘Pact for Research and Innovation in Europe’. ◆ Successful elaboration of seed funded initiatives, such as Horizon Europe and other external funding applications. ◆ Strong citizen, CSO/NGO participation in research via ER Research Cycle. ◆ ER integrated within all PG Masters/PhD programmes ◆ Support to non-traditional researchers and non-traditional ER methodologies ◆ Curricula integration of ER and advancement of research-based teaching ◆ European Science Shop model developed within the UG curriculum ◆ Baseline Mapping and a Common Understanding of ER achieved. ◆ Measurable impact of UNIC4ER demonstrated on a formative and summative basis. 	<ul style="list-style-type: none"> ◆ Strategic and coordinated approach to ER with cities evolving ◆ The UNIC European Declaration of ER established as a European-wide model of best practice and a key policy advocacy tool. ◆ ER established as a key contributor in addressing key regional and societal challenges, e.g.as a key enabler of the EU Climate Neutral and Smart Cities, Economy, Well-being, Arts & Culture etc. ◆ City research challenges addressed in collaboration with societal partners & democratic competencies developed ◆ Successful conversion of seed funded projects into HEurope and other external funding applications. ◆ Strong institutional identity and culture of ER developing ◆ Researcher and institutional capacity for ER increased. ◆ Increased profile of ER within the European Policy context ◆ Strategic use of UNIC4ER investment demonstrated and disseminated 	<ul style="list-style-type: none"> ◆ UNIC Urban Institute established as a European Centre of Excellence for ER and a European demonstration site on addressing urban challenges & Post-Industrial Transitions. ◆ Strong research interface between cities and universities with increased capacity of cities to respond to societal challenges and SDGs. ◆ Increased democratic competencies through participation of citizens and public sector partners in co-creating research. ◆ Measurable impact on key EU Urban Agenda priorities and SDGs. ◆ A culture of ER embedded within the mission and operations of UNIC participating cities and universities ◆ Students are prepared to contribute fully to society as reflexive and civically engaged citizen leaders. ◆ ‘Emplacing’ research in local contexts through deep engagement towards agentic communities & interdisciplinary and transdisciplinary connections between economy, society, ecology and culture.

3.2 Overview

3.2.1 FOCUS ON EXCELLENCE

Higher Education Institutions in the EU are and have been recognized for their global leadership in the fields of research and innovation. Nevertheless, in recent years these institutions have witnessed inertia and growing disparities between countries and regions. The challenges that Higher Education Institutions face concerns not only to bridge the gap between the HEIs disparities in terms of R&I performance but also to build a R&I system where HEIs in Europe can navigate and cooperate in the production and dissemination of high-quality knowledge co-created with society. The main challenge concerns structural changes that are needed to maximize the value of research and its impact within Europe and its regions on urban challenges and SDGs.

Considering the above-mentioned challenges, the overall aim of UNIC4ER is to help and support Higher Education Institutions to successfully implement a strategy and individual pathway for inter and intra institutional research transformation. Building on prior learning and aligned with EU policy targets, going forward, UNIC4ER involves a focus on **key building blocks and acceleration initiatives** designed to facilitate institutional transformations in the field of Engaged Research and Innovation, and strengthen institutions and participating cities, and their European University collaborations.

UNIC4ER specific objectives over the period:

1. To improve methods by which research is conducted by ensuring that capacity for co-creation with societal actors in R&I systems is scaled up beyond the current state-of-the-art standard.
2. To establish a common UNIC research interface between university and cities and increase and support sustainable long-term actions that progress city-university collaboration and institutional transformations and evidence-based urban development.
3. To enhance human capital in the field of research and innovation by carrying out actions that address co-creation, lifelong learning practices, talent mobility, inclusiveness & gender policies.
4. To promote dynamic and collaborative inter institutional settings that support and facilitate knowledge-sharing, shared infrastructure, data and other resources; by establishing an active network of actors which work together to address urban challenges and SDGs.
5. To incentivize co-creation of knowledge and develop corresponding best practices and policy recommendations based on the impacts of these actions around institutional transformations.

3.2.2 BUILDING BLOCKS

➤ **Investment in Human Capital**

This domain deals with knowledge-quality improvement as well as policies for inclusiveness in the fields of R&I. It includes intervention areas which are understood as crucial to achieve institutional transformations: such as reforms on knowledge co-creation with societal partners, research assessments, gender & inclusiveness plans, life-long learning practices, sustainability, etc. Transformation around human capital for R&I most importantly involves capacity development and investment in people and the conditions through which human capital is produced.

➤ **Strengthening the Research Process**

This focuses on the conduct of research e.g. the digitisation of research, RRI, open science / open research, professional development, curricula integration, and societal engagement. The strengthening of research processes reinforces the role of Higher Education Institutions in R&I ecosystems and evidence-based urban development.

➤ **Resourcing**

Resourcing, which involves the development of sustainable financing schemes and strategic partnerships and networks, and the setting of a shared agenda with funding agencies and philanthropy, are all key activities for advancing Human Capital and Research Process transformations. This primarily focusses on the development of an ER Transformation Fund.

3.2.3 ACCELERATOR INITIATIVES

The following initiatives will significantly advance UNIC4ER and its positioning as a European Centre of Excellence for Engaged Research on Urban Post-Industrial Transitions.

1. Urban Institute
2. ER Transformation for Impact Fund
3. Living Lab
4. Technical Support and Expertise
5. Community of Practice
6. Embed Engaged Research in Policy

3.3 Urban Institute (PITA)

The **UNIC Urban Institute** will advance engaged research on Post-Industrial Transitions. It will be a virtual institute comprising select members across UNIC with an interest or specialism in urban research. The URBAN INSTITUTE will offer a structural platform for the work of transdisciplinary knowledge creating teams. It will advance institutional and ecosystem learning based on Local Engaged Research Roadmaps as part of the UNIC4ER Meets the City framework. This will provide a more systematic framework and entity for engaged research and collaborative external research funding applications, reaching beyond the current ambitions of the UNIC European University, to become one of Europe's leading centers of excellence on post-industrial transitions and research through co-creation with society.

The Urban Institute will recast research interactions between researchers, city authorities, citizens (e.g. students) and other stakeholders, in order to create regional integrated problem-solving research partnerships demonstrating how university and city collaboration can become a motor of post-industrial transitions. The Institute will offer a structural platform for the work of transdisciplinary knowledge, creating teams composed of universities, cities, their citizens and other stakeholders (such as other research institutes, companies, NGOs plus multiplier organisations), to

engage in challenge-based research laboratories for institutional and ecosystem learning. The Urban Institute will form a truly European structure that connects teams from across all 10 partners and 10 cities, to form a truly European space for co-creation. Through Inter/transdisciplinary Research Platforms the Urban Institute will promote collaborative and inclusive research that addresses local, regional and/or global challenges. The platforms will bring together researchers from different faculties, teams and research units across UNIC, who will then work in collaboration and co-creation with city partners, to advance research and innovation on agreed and well delineated themes e.g. Ageing and Wellbeing, Economy, Arts and Culture, Sustainability, Inclusion etc.

The Urban Institute will:

- Be a virtual horizontal institute – and UNIC wide
- Progress transdisciplinary engaged research on post-industrial transitions.
- Integrate and re-position CityLabs, UNIC4ER, and the Superdiversity Academy more effectively and evidence-based urban development.
- Be governed by a Board of Directors, Management and Operational Team.

3.3 Engaged Research Transformation for Impact Fund

The Engaged Research Impact and Transformation Fund is intended to support research projects that respond to research needs articulated by societal stakeholders and that engages external partners in all stages of the Engaged Research Cycle. The Fund will be designed to build researcher and external partner capacity for engaged research for impact, particularly research that contributes to Urban Post-Industrial Transitions and SDGs, bring research evidence to bear on public policy goals. It will also assist in positioning early research activities for external funding, e.g. seed funding consortium bids for Horizon Europe. The fund will specifically support transdisciplinary research and a shift away from discipline-driven research. It will encourage early career and nontraditional research.

- The Impact Fund will integrate all existing UNIC4ER research funding schemes and include matched contributions from European, national / local governments, philanthropy, and university funding sources.
- It will become self-financing through reinvesting a percentage of indirect costs from collaborative Horizon Europe and other external funding granted to UNIC partners. E.g., 5% agreed with universities.
- It will be professionally administered by the Urban Institute, including transparent application criteria, pre and post grant professional advisement and management.

-
- It will seek significant practice change and in-kind contributions from research partners e.g. government agencies, city departments, NGO's/ CSO's etc.

3.4 Living Lab

A UNIC Living Lab (CityLab) will serve as common research and learning interface with cities. It will support co-creation methodologies and competencies in line with the Living Lab (LL) methodology. This will enable the institutional transformation of HEIs (acting-LLs) into user-centred, open innovation ecosystems based on a systematic user co-creation approach, integrating research, learning and innovation processes in real life communities and settings. In line with the building blocks of Living Labs integrative process, knowledge on LL methodology will support HEIs to implement all the main steps of the innovation development: stakeholders across the quintuple helix being actively engaged in the research and learning process from the very beginning underpinned by research roadmaps and collaborative funding applications.

- UNIC CityLabs will be managed as one common entity and one common research and learning interface between all 10 cities and universities
- It will be managed by experienced external / public engagement professionals
- It will be governed by the Urban Institute Board of Directors, an overall CL Manager and a full time CL professional staff member and a full-time urban data specialist in each city working as an integrated virtual team.

3.5 Technical Support & Expertise

This acceleration initiative will support cities and universities to form research teams to collaboratively address identified research need and develop joint external funding bids, e.g. Horizon Europe, etc. It will facilitate the identification of research need and priorities articulated by city partners (Municipalities, CSOs/NGOs and Citizens) and researchers based on urban data. This will be expertly supported using a standardised common approach based on best international practice e.g. Quintuple Helix, Oulu Innovation Alliance, and / or Deusto 360 Model. It will support the development of research roadmaps that will inform joint collaborative research funding applications.

A match making service will identify funding opportunities, backed by a database that will allow HEIs & societal actors to bridge the gap and dovetail with each other regarding mutually beneficial alliances. It will be constituted by a platform that will forge links between different actors in the Higher Education Sector, cognisant of the needs and strengths of each HEI and city. It will seek

synergies with H Europe, EIT's HEI Initiative: Innovation Capacity Building for Higher Education and Erasmus+ Alliances for Innovation to encourage and foment collaborations between universities, research organizations, society and industry collaborate to create value.

This acceleration initiative will ensure that the UNIC4ER Meets the City framework establishes an ongoing iterative process for supporting the cocreation of engaged research, by 1) regular consultation and update of the Local Engaged Research Roadmaps, 2) launching Calls for collaborative UNIC Engaged Research Initiatives, based on these Roadmaps and 3) recasting interactions for partnerships formation with cities and their ecosystems.

- A grant management professional will form part of the Urban Institute Executive Team
- The grant manager will oversee a research application system, initiate collaborations and liaise with all partners in the grant application process to ensure timely and effective grant applications.
- Each university will appoint a dedicated research office liaison to assist with UNIC grant applications
- Each city will appoint a dedicated liaison to facilitate grant applications with UNIC.
- Virtual database of researcher's, city expertise NGO/CSO Partners via online platform will facilitate linkages and consortium creation

3.6. Community of Practice

The Community of Practices (CoP) will be supported by experts with experience in institutional transformation in HEIs and Cities (a call for experts will be launched). The first step of CoP will be to establish a network (that will be assembled and collected through the generation of a database) identifying the community of interest and engaging all actors from the quintuple helix that can provide a support to co-creative events. It will be the body of knowledge, methods, stories, cases, tools, and documents that will nurture and feed UNIC4ER activities. In this way the CoP will create examples that allow people to learn by doing. The CoPs will be supported by a knowledge sharing online platform.

UNIC4ER will establish the following CoPs:

- City Leaders Research Forum
- Research Directors Forum inclusive of expertise on integrative urban development and evidence-based urban development
- UNIC Research Practitioner Forum (Academic and Professional Staff) inclusive of specialised support to non-traditional and early career researchers.

The CoP itself will define the area of shared inquiry and the key issues to work on and provide advice and guidance on methodologies, knowledge, resources, infrastructures, and tools and data in order to maximize the impact of UNIC4ER.

UNIC4ER will also develop skillsets and capabilities through different educational and learning activities e.g. learning hubs, peer-to-peer support schemes and the creation of knowledge sharing events e.g. conferences.

- Learning Hubs are aimed at creating and developing tailored training paths conducted by an experienced HEI on a specific intervention area, who transfers the knowledge to those who require it. The activities will focus on discussions about observations on workable solutions for the relevant topic. The model of service delivery is based on mapping educational needs and then providing innovative education design methods and approaches to successfully evolve the skillset. The Learning Hubs will be mainly based on virtual platforms. They will support learning around the research process e.g. the digitisation of research, RRI, open research, and societal engagement.
- A peer-to-peer support scheme will aim to facilitate the transfer and implementation of innovative practices between HEIs and cities. The tangible scope is to achieve concrete operational results through peer-to-peer best practice exchange. The experienced HEI's or city's role is to expand and deepen the knowledge of the other participants through workshops and seminars.
- International Engaged Research Conference: open to all researchers and societal partners
- COP will support non-traditional/under-represented researchers and early career researchers interested in engaged research, addressing any structural challenges with support mechanisms.

3.7 Embed Engaged Research in Policy

Current research and innovation activities are often focused on the commercialization of research outcomes and on technological innovation, and less on interaction with different stakeholders that could benefit from the high innovation potential of universities. Whilst in some EU countries, intermediary structures are well-developed for UBC, e.g., through the role of TTOs and ILOs, there is often a lack of equivalent structures to strengthen, systematize and institutionalize cooperation between academia and other sectors, such as in government and the third sector. A specific goal of UNIC4ER is impact through utilizing engaged research evidence in public policy for impact locally, nationally and internationally.

Research evidence for public policy uses research findings to inform new policies or improve effectiveness of existing programs, supporting data collection and analysis for research and management, developing policies that incentivize the use of evidence. Research-performing actors generally, and universities in particular, have a crucial role to play through their research activities in strengthening Europe's contribution to the achievement of high-level EU policy goals, such as combatting climate change, addressing the issue of ageing societies and contributing to the SDGs.

Innovation is not confined to technological innovation and to cooperation with industry, but can often be driven by co-operation between academia, public agencies, NGOs and CSOs. Moreover, the

evolution towards a quadruple (or quintuple) helix model has reinforced the importance of universities engaging with third sector actors, such as NGOs, and community-based organisations (CBOs), which influence civil society and may help to address the societal challenges. Some universities are already deeply involved in their local R&I ecosystems and have formalised their role and relationship with a combination of public, private, not-for-profit and civil society stakeholders as part of the process of embedding within ecosystems. For example, UNIC has signed a formal declaration, the European Declaration of Engaged Research which provides a framework for cooperation between universities, city and municipal authorities and other sectors in an urban environment and city-based context. The initiative is supported by 10 universities and 10 cities which are based in postindustrial urban city settings. These universities have vowed to develop close relationships with their surrounding urban ecosystem with a view to affecting socio-economic development, cultural and civic life and urban policy.

Transformation can bring new opportunities and change the city's role in its ecosystem. Cities' increased opportunities for cities are contingent on how well a city embraces its role as a changemaker. Nowadays, cities are becoming more and more proactive: they are visionaries, strategists, practitioners, and evaluators. In this new paradigm cities don't just appear, they are made. In this, cities are analysed and developed based on multiple voices and versatile understanding. Knowledge management becomes a key approach in Evidence-based Urban Development. To work on real urban data and impact, UNIC4ER looks to connect with our UNIC cities' knowledge management, data management and strategic planning.

UNIC4ER will:

- Develop a focus on evidence for public policy (EPP) as a key aspect of the Urban Institute, particularly around urban post- industrial transitions, becoming a center for excellence in Europe.
- Adopt and incorporate the UNIC European Declaration on Engaged Research within all partner institutions' strategic plans and in partnership with our external stakeholders.
- Integrate Engaged Research Evidence for Public Policy at the forefront of the UNIC member institutions to improve, understand, and investigate issues of public interest where societal partners are active collaborative participants in co-creating the research process.
- Appoint a UNIC wide unit and leadership position to bring a sustained focus on EPP, assisting to facilitate researchers to translate research evidence to public policy impact and liaise with key National and EU Public Bodies, Governments and NGO's /CSO's. This would in time provide a range of services to support a whole ecosystem, both within and outside the university (public agencies, SMEs, NGOs, citizens etc.), following a transdisciplinary approach (combining for example engineering, social sciences, health, etc.) and thereby enhance universities' contribution to societal transformation.

3.8 Strengthening the Research Process & Integrate ER within Curricula and Professional Development

3.8.1 OPEN RESEARCH

UNIC has a distinct focus on “Open Science” (OS) refers broadly to the scientific creation of transparent and accessible knowledge that is shared and developed through collaborative networks. The term specifically refers to a movement in the scientific community that envisions a general shift towards a more open, collaborative, data-intensive and networked way of doing research and sharing research results that supports the early sharing of research outputs in open access modes, empowers the participation of non-academic scientists in the research process (e.g., citizen scientists), and promotes an active engagement with the public. The goal of Open Science is ultimately to open up the research process, increase collaboration and make research results more reproducible.

UNIC4ER will:

- Implement an Open Research strategy that will deliver all stakeholders access to the latest research to accelerate implementation of findings, deliver impact and contribute to a more egalitarian knowledge society.
- Provide resources for IT development of the Virtual Campus for additional functionalities, software applications and resources designed to support research activities.

3.8.2 RESPONSIBLE RESEARCH AND INNOVATION

Responsible Research and Innovation (RRI) is a major cross-cutting theme of Horizon 2020, specifically promoting collaboration with society throughout the research and innovation process. Much of the body of knowledge and practice built up in Horizon 2020 on RRI is still relevant within Horizon Europe ([Horizon Europe Programme Guide, 2021- 2027](#)).

- UNIC4ER Task 4.1 calls for following the principles of Responsible Research and Innovation and in order to foster public engagement in our Engaged Research Infrastructure, a review on previous successful EU funded projects (Horizon Europe, Urban Innovative Action, JPI Urban Europe, Interreg and URBACT - see Task 4.1) as well as on existing research literature will be carried out by the UNIC4ER Engaged Research Taskforce (D1.5).
- What is RRI? UNIC4ER will implement a RRI plan grounded in best practice and aligned with Horizon Europe.

3.8.3 PROFESSIONAL DEVELOPMENT

Professional development is a critical enabler to support researchers, students, and community partners to help create a research culture of collaborative research engagement that benefits all facets of society while developing engaged research capacity. CPD training would also provide an opportunity to recruit participants into the Community of Practice (Excellence) on Engaged Research.

UNIC4ER will:

- Assist institutions to integrate ER in academic promotions, professional development, recruitment, and staff retention policies.
- Develop Engaged research leadership training course for research and city leaders/managers
- Develop a Joint PG Cert / Masters in Engaged Research, either as part of an MA in Community Engagement or as a standalone Masters
- Develop Open science trainings to bridge the gaps identified across the consortium
- Develop Trainings for embedding inclusion and decolonisation into the curriculum, driven by the Super-Diversity Academy.
- Develop Trainings for universities and cities and around the 'meets the city' framework.
- Provide CPD support for non-traditional scholars (underrepresented researchers)
- Develop an introductory level MOOC and open-source web-based toolkit to support Engaged Research CPD for beginners.

3.8.4 INTEGRATION OF ENGAGED RESEARCH IN CURRICULA

Research-based practices are often used in Learning and Teaching to motivate students through practical real-world applications and simultaneously providing them insights into the research process. In turn, UNIC4ER advocates for the integration of Engaged Research theory and practices across the curricula for the advancement of research-based teaching. Engaged Research needs to be integrated within Joint 10 Masters programmes currently in development, e.g., Redesigning the Post-Industrial City (RePIC) and should be embedded into all multilateral and bilateral PG Masters/PhD programmes. Funding should also be secured from Marie Currie for PhD ER training programme. There is also much scope for Micro credentials to be established. E.g. an elective model on urban resilience and post-industrial transitions.

UNIC will focus on Research Based Teaching:

- Integrate engaged research practices e.g. Challenge Based Research via the Science Shop approach, across the curricula where students, researchers, community stakeholders and citizens generate new knowledge and co-create innovative solutions to real-life challenges.

-
- Support and nurture multilateral and bilateral ER collaborative initiatives focused on curricular integration.
 - Provide formal recognition for student led ER, in the form of micro-credentials, letters of reference, or publicly listed acknowledgements that students could use as forms of reference as their careers progress. This creation of incentives through formal recognition would increase the number of student contributions, thereby increasing the number of higher quality inputs via cooperation, ownership and development (student board).
 - Integrate engaged research into ERASMUS+ funding for service learning and blended intensive programmes (BIPs)

4.0 Communications

4.1 Current Capacity

The current UNIC communications capacity is not equipped to support long-term communication and dissemination goals of UNIC and UNIC4ER. There is a lack of both resources and human capital to function as a fully operational communication department that can garner visibility for the accomplishments of the entire UNIC programme. However, as the UNIC ambition for long-term sustainability comes to be realised, communications efforts will need to be reconfigured to mirror the Marketing and Communication departments of functional Higher Education Institutions, which includes specific communications on Engaged Research.

When looking towards the future, UNIC4ER and the Communication and Dissemination unit should work more closely to ensure that the findings and results from Engaged Research are widely distributed. Further, there will be a need to garnering more visibility for other key UNIC4ER deliverables, e.g. the Engaged Research Community of Excellence, UNIC4ER Engaged Research Infrastructure, the UNIC4ER Open Science Campus, etc. To date, information on UNIC4ER activities such as the Strategy Forum on the UNIC website and featured articles on UNIC4ER have appeared in the bi-annual newsletter. However, the knowledge and understanding of Engaged Research and UNIC is not ubiquitous across partner institutions and their surrounding communities

UNIC and UNIC4ER will focus on:

- Developing a Knowledge Management Plan and supporting infrastructure that facilitates a more systematic approach to capturing and communicating current engaged research activity.
- Increasing the resources to increase staffing and procure technology to expand the current operational capacity of the Communication and Dissemination unit.

4.2 Targeting Key Stakeholders

Communications needs to effectively aim for key UNIC4ER stakeholders across the quintuple helix to in university staff and students along with city and regional stakeholders, university stakeholders with a multi-segment marketing strategy. The market segmentation approach divides prospective audience into distinct categories based on factors such as demographics and behavior which would facilitate a more accurate target demographic than mass marketing and broad messaging. Such an approach would be inclusive of print and social media channels.

Within partner university, there is explicit need for a common understanding of engaged research as the umbrella term for the various underlying methodologies such as citizen science or participatory action research which was articulated in the recent UNIC European Declaration of Engaged Research (see Appendix E). The nuance of engaged research and methodological approaches can be managed through CPD training while the broader concepts and promotion of CPD can be promoted through comms releases. There is also the need to promote collaborative impact-oriented research amongst staff within UNIC partner institutions.

Explicit commitment to raising awareness of UNIC4ER and its activities among respective student bodies is also needed. This could include not only the promotion but the gathering of outputs of select student events (e.g., brainstorming, design thinking, feedback, community mapping, etc.) could also contribute to UNIC4ER's own outputs and deliverables thereby increasing UNIC4ER's capacity and students' awareness whilst ensuring the student voice is heard. Feedback could also include lived experiences by students aimed at identifying gaps that UNIC4ER and its deliverables via online platforms such as Google Forms thereby serving as an ongoing repository of student voice.

Similarly, communications need to target municipal leaders, business and enterprise, and societal partners, i.e., NGOs and CSOs. This would aim to ensure that these entities are aware of the benefits of co-created research and the overall efforts of UNIC4ER. Additionally, city partners should be surveyed to understand their desired level of participation and areas of interest to build a front-runner approach for urban knowledge management and database of potential co-creative partners.

4.3 Policy Liaison

There is a need to build capacity for engaged research across UNIC and in partnership with national and international networks including advocacy for resources and financial support. Staffing is needed to not only disseminate research outputs and impacts but to inform and lobby for additional EU policy supporting and resourcing engaged research and the European Universities projects such as

UNIC. Efforts would also need to focus on national and regional funding bodies as well as philanthropic organisations.

A key enabler will be recruiting University Rectors, Research Vice Presidents/ Directors and City CEO's and Mayors (especially) as ambassadors for Engaged Research. This will involve developing a series of speaking opportunities and targeted conversations with policy makers to highlight UNIC, the European Declaration of Engaged Research and the work of UNIC4ER and the Urban Institute. Having comms materials readily available for these leaders and keeping UNIC and UNIC4ER on their agenda consistently will be important.

5.0 Evaluation and Dissemination

5.1 Evaluation

5.1.1 PEER REVIEW AND SELF ASSESSMENT FRAMEWORK TOOL

UNIC4ER has developed an Institutional Self-Assessment Framework tool for engaged research in Higher Education (Meta Framework). It is a means of conducting a baseline assessment of Engaged Research activity across the consortium according to 8 mutually reinforcing domain areas. It serves also as a quality enhancement tool, as it allows universities to conduct an institutional SWOT analysis and address gaps and opportunities. Going forward this will be further refined and developed into an online tool that will allow any university world-wide to conduct a self-assessment. Within UNIC a peer review team will be set up, of expert colleagues to conduct site visits to each university over the grant cycle to conduct peer audits using the self-assessment framework.

5.1.2 EVALUATION FRAMEWORK

In addition, a Logic Model has been developed, which has delineated a series of short-term outcomes, long term outcomes and legacy outcomes to measure the impact of the initiative and form the basis of an Evaluation Framework to be conducted by an external evaluation team. The general purpose of the Evaluation Framework will be to describe and guide an external evaluation process and explicitly set down its underpinnings in a Theory of Change approach to evaluation that focuses on how those implementing a programme believe it will bring about the change intended, how that change can be measured or explained, and whether the underlying hypotheses and assumptions prove to be accurate. It thus attempts to maximise the learning gained during the process, while at the same time systematically measuring progress.

The evaluation will cover three areas:

- a. Ongoing process, or formative, evaluation of UNIC4ER until its conclusion, working closely with the Board, management team and partners through discussion and reflection;
- b. Analysis and documentation of the learning, practices and processes associated with UNIC4ER with a view to extracting lessons and documenting a best practice model.
- c. Evaluate the effectiveness, impact and Social Return on Investment of the ER Transformation for Impact Fund.

In addition, an ongoing internal monitoring framework will:

- Conduct systematic monitoring and evaluation of the application and impact of engaged research by using quantitative and qualitative data collected every six months and disseminated both on the UNIC4ER Pulse Dashboard and through our communications channels.
- This Dashboard is a monitoring and evaluating tool that will enable a learning process on how to enhance impact and to continue refining our approach to engaged research.

6.0 Budget and Resource Use

UNIC4ER will seek an investment of 13.5 M OVER 5 YEARS from the following sources:

% of indirect costs from external grant funding	5,000,000
SWAFS 2 nd round	2,000,000
Philanthropy	2,000,000
Industry	1,000,000
National governments	3,000,000
TOTAL	13,500,000

**In addition to existing 2m SWAFS Grant, UNIC4ER will seek 1m from the next round of Erasmus+ Grant

EXPENDITURE

Urban Institute Management	2,500,000
ER Transformation for Impact Fund.	5,000,000
Staff positions	6,000,000
Operational Funding	1,000,000
TOTAL	13, 500,000

7.0 Governance, Management and Operations

Mainstreaming Engaged Research within the mission, policies & practices of each institution and as a key element of Universities Third Mission, is a means of creating value for our city and community stakeholders thus driving a sustained focus on policy and practice integration of ER, requires high level guidance and direction. Given the disparate nature of UNIC4ER and the advent of the Urban Institute, a clear organisational structure is required to enable and position UNIC4ER for success going forward. It is proposed that a UNIC4ER Governance Framework is established comprising:

- ◆ A Board of Directors
- ◆ An Executive Management Team
- ◆ Operational Team
- ◆ International Expert Advisory Group (EAG)

This Governance body will have a best practice formal terms of reference agreed by all partners, and have oversight over the Urban Institute, UNIC4ER, CityLabs, Superdiversity Academy and other relevant entities and programmes. It will ensure UNIC4ER is adequately embedded in the overall UNIC structure with the Chair of the Board sitting on UNICs Steering Committee.

It will include senior level representation from Cities, NGO's/ CSOs, Industry and EU / National Government, as well as student and research staff. The Board will include an Urban Institute Executive Director and Urban Institute Manager (ex officio). An executive team will include also a Grants Manager, EPP Manager, Data Management Specialist, and CityLabs Manager. Operational staff in each university will work as an integrated team, directed centrally via the Urban Institute and line managed locally. These will include ER Coordinators and CityLabs Coordinators.

A high level International EAG will be established, meeting twice yearly it will advise the Board and Executive Team. This will comprise individuals with significant European and international recognition, influence, political and financial gravitas.

The Urban Institute will develop a business plan, and an operational plan to guide its work. It will have clear goals and KPI's, reviewed annually by the board and EAG.

UNIC4ER will cultivate a number of Strategic Partnerships that add value to the work including Campus Engage, Living Knowledge Network, IMISCOE, URBACT, DG Regio, DG R&I, Eurofound, EU Climate Neutral & Smart Cities

Delivery Partners for UNIC4ER include:

- ◆ Municipalities
- ◆ City stakeholders
- ◆ Regional NGO/CSOs
- ◆ National and Regional Governments
- ◆ Citizens

Appendix A

A.1 UNIC Consortium Partners

- University of Deusto (UDEUSTO) is internationally renowned for its capacity in the Social Sciences and Humanities. Interdisciplinary research is articulated around 5 interdisciplinary platforms on Social Justice and Inclusion, Ageing and Wellbeing, Creative Industries and Cities (B-Creative), Gender, Strengthening Participation, plus 4 interdisciplinary areas on Energy, Health, Territory, and Industry 4.0. Centres of excellence include the Cities Lab Katedra, Best Map. 360º Creative Cities Concept and Basque Cities 4.0: from Smart cities to Wise Cities.
- Ruhr-Universität Bochum (RUB) has the founding mission of teaching the region’s industrial workers’ sons and daughters. There are two Clusters of Excellence – RESOLV in chemistry and CASA in cyber security. RUB is also home to Worldfactory which helps advance new promising ideas with support and (seed) capital.
- University College Cork (UCC) prides itself as being a university ‘with and for the community’ and on its societal engagement across lifelong learning, community-based research and learning, and volunteerism. Additionally, the Institute for Social Science in the 21st Century focuses on issues of migration, diversity, integration and social exclusion. The MaREI Research Centre is a global leader for research and innovation in Energy, Climate, and Marine Research & Innovation. UCC is pioneering 10 new research ‘Futures Institutes’ that will bring a transdisciplinary, innovative and engaged focus to solving societal challenges, across the humanities and sciences.
- Koç University (KU) in a superdiverse city as Istanbul and is home to the renowned Migration Research Centre; the Social Impact Forum; the Centre for Research on Globalization, Peace, and Democratic Governance; Gender Studies Centre (KOÇ-KAM); and the Social Policy Application and Research Centre.
- University of Liège (ULiège) is home to the Centre for Ethnic and Migration Studies and the Institute for Research in Social Sciences which supports key UNIC goals and objectives. The University of Liège relies on their experience with bringing companies and entrepreneurial expertise into the university (VentureLab), bringing entrepreneurs and the creative sector together (Liège Creative) and uniting the city and social sciences (Maison de Science de l’Homme).
- The University of Łódź is a new partner in the UNIC Consortium and it has an expressed intuitional mission to *is to conduct research in a reliable manner and to proclaim the truth that comes from it, so as to educate the next generations wisely, be useful to the society and boldly respond to the challenges of the modern world.* The University of Łódź hosts the

interdisciplinary Centre for Migration Studies and the Center for Sustainable Development Studies

- Malmö University is also a new partner in the UNIC Consortium. The vision of the institution is *to contribute to a more sustainable and equal society through research-based knowledge, critical reflection and readiness to act*. Malmö Institute for Studies of Migration, Diversity and Welfare and the Institute for Urban Research.
- University of Oulu (UOULU) is home to the University Innovation Centre and a founding member of the Oulu Innovation Alliance and has catalysed transition of Oulu business ecosystem in various stages of technological developments. UOULU is also a pioneer university in creating and understanding the digital future and is a global front runner in 6G research.
- Erasmus University Rotterdam (EUR) coordinator of Europe's largest academic research network in migration studies, the IMISCOE research network on International Migration, Integration and Social Cohesion in Europe (www.imiscoe.org). This provides EUR with access to an almost unlimited pool of academic research and expertise on migration and integration. DRIFT institute is also a centre of excellence for research on and for sustainability transitions.
- University of Zagreb (UNIZG) is the biggest and oldest university in the Republic of Croatia. Established in 1669, it is now comprised of 34 faculties and academies. Being the central higher education and research institution in Croatia, the UNIZG seeks to enhance teaching and science in all fields relevant to the development of the state. These efforts are strongly supported by the University Computing Centre, which with time outgrew its primary function as in-house IT development centre and now serves the needs of multiple national educational institutions, including those on primary and secondary level.

A.2 THE 10 UNIC Cities

- Bilbao, Spain is known for developing an urban transformation to survive from the industrial, economic, social environmental and cultural crisis of the early 80's. It is also a post-industrial city characterized by the economic restructuring of harbour and metal industries. Bilbao has a population of 346,000 inhabitants.
- Bochum, Germany stands for Knowledge as the key for transformation; Change as our way of life; and Solidarity as our attitude towards life and its key industrial sectors in IT Security, Research Institutions and Health Care. It is a post-industrial city that can be characterized losing of the Opel factory and has a population size of approximately 370,000.
- Cork, Ireland is noted as having the world's 2nd largest natural harbour and the main economic drivers are the Port of Cork, pharma, bio-pharma, healthcare & life sciences, IT, agriculture, food financial services, energy & marine, leisure & tourism. It is a post-industrial city characterized by the closing of the Ford car plant and has a population of 300,000.

-
- Istanbul, Turkey is known as a city that connects two continents and is one of Europe's hotspots of superdiversity. It is a city that has undergone rapid economic transformation and has a population size of 15,462,452
 - Liège, Belgium is known for having Communities of Social Solidarity and Tolerance "l'esprit liégeois". It's coal mining and steel-making industries are at the end of life. Liege is a transitional city in terms of mobility, nature and urban redevelopment and has a population size of 197,355.
 - Łódź, Poland is a former industrial centre and is the third largest city in Poland with a population of 664,071. Lodz has been referred to as the Manchester of Poland and suffered the decline of its textile industry and now has the reputation as one of the greener cities in Europe.
 - Malmö, Sweden is post-industrial city reinvented itself as a dynamic knowledge centre built on cultural diversity, youth and sustainable development. The rapidly growing population presents opportunities and challenges for social welfare and Malmo has a population size of 351,749 including people from 183 countries.
 - Oulu, Finland is a city noted for top-notch ICT expertise, a well-educated population, and crazy events. Oulu suffered the collapse of the Nokia industry creating a link to the other consortium partners and has a population size of 209,648.
 - Rotterdam, Netherlands is home to the largest port in Europe and is noted for its modern architecture. However, the digitalisation of the harbour created a post-industrial transition. Rotterdam also has a population of 623,652 people.
 - Zagreb is the capital of Croatia, well connected to other capital cities in the South-Eastern Europe and the Adriatic coast. It boasts strong financial, IT, chemical, and food industry sectors and is home to one of the biggest universities in the region. Due to the manufacturing shutdown in the post-socialist era, Zagreb is currently undergoing a post-industrial transition. It is a vibrant city with a population of 769,944, including a student population of more than 60,000.

Appendix B

B.1 The Meta Framework to Focus and Group Activities

The Meta Framework structure provides a means of understanding the collective challenges of UNIC4ER such as developing collective infrastructure or centres of excellence, or allocating resources and defining our aims, objectives, and goals. The Meta Framework reflects the project mission and organizational culture as well as the everyday practice and support of engaged research.

The following eight domains were developed to guide development of the survey instrument to holistically evaluate institutional practices and identify systemic levers and drivers affecting engaged research across the consortium.

- **Governance & Leadership & Policy Context** - the key principles that guide the aspirations and practices within and amongst our academic institutions that enable or limit the effectiveness of engaged research. This category also includes internal governance structure(s) with responsibility for research policy.
- **Organizational Systems, Infrastructure, Funding, People & Incentives** - all factors that enable, encourage, and sustain engaged research which include the multiplicity of dynamic interactions amongst people, capital investment and the built environment - essentially taking a comprehensive, integrative and holistic systems-based approach.
- **University and Society Collaboration & Co-Creation** – Strategies, policies and practices, communities of interest or practice that expand the scope of engaged research by establishing processes to enhance the reciprocal exchange of knowledge and provide networking opportunities for co-production amongst academia, government, civil society and enterprise.
- **Preparing & Supporting Engaged Researchers** - systems, practices and capacities existing at UNIC partner institutions to assist researchers understand the significance of engaged research; to align their existing research skills and expertise with engaged research objectives and methodologies; to identify and connect with societal partners and other academic researchers across disciplinary lines; and to identify, secure and administer research funding.
- **Engaged Research in Teaching & Learning and Research Based Teaching** - strategies for the integration of Engaged Research, Teaching & Learning into undergraduate and postgraduate curriculum so that students learn to understand the processes and methodologies to advance the frontiers of knowledge while realizing the necessity of engaging *with* community partners rather than ‘for’ or ‘on’ them and thus helping democratize the research process.
- **Open Research and Digital Transformation & Capability** - the open sharing of research artifacts such as publications, data, physical samples and software for broad distribution and dissemination to all levels of society to include academics, government, community organizations, engaged citizens and enterprise. Open Research includes Open Science while

expanding inclusion to all disciplines such as the Arts, Humanities and Social Sciences. Open Research aims to foster transdisciplinary dialogue and research wherever feasible and bridge gaps between the Global North and South.

- **Internationalisation and Trans-nationalization** - capacity to form engaged research partnerships and networks beyond individual nation states which allows for a pooling of academic expertise and resources to focus attention on the global challenges of our time which transcend national borders yet can have common patterns of cause and effect amongst many city regions around the world.
- **Measuring Impact** - quantitative and qualitative methods for assessing the impact and societal benefit of engaged research within and across cities. In the UNIC context, this can be collaborative engaged research initiatives such as RDI projects, publishing academic papers, creating partnerships, generating data, or effecting policy which advances the UNIC CityLab Challenge areas, the European Urban Agenda and the SDGs.

Appendix C

C.1 Strategy Forum Introduction

The following is a report from the in-person UNIC4ER Strategy Forum in Cork, Ireland in March-April of 2022. Much of this Strategy Forum was designed to serve as a consultation process to inform creation of this Engaged Research Strategy document. The following text can also serve as a supplement to the initial UNIC4ER Strategy Forum (Deliverable Report 2.1) which occurred online in January of 2022 because of the COVID-19 pandemic.

One of our goals within UNIC4ER is to develop a common framework and supportive systems for involving and engaging citizens, civil society, public & city authorities and academia in joint research and innovation initiatives. Towards this ambition, the Engaged Strategy Forum, among other things, enables the development a common mapping strategy for engaged research and a common understanding of engaged research towards an engaged research strategy document and a draft *Declaration on Engaged Research*, in advance of signing by our eight UNIC University Presidents and City Leaders on the 15th of June 2022 in Oulu, Finland.

The COVID-19 pandemic and subsequent travel restrictions prevented an in-person meeting in Month-4 of this project as originally planned. As a result, 4 virtual workshops took place on 18th- 19th January 2022 which were reported on in Deliverable Report 2.1 UNIC4ER Engaged Research Strategy Forum. Those online workshops examined and interrogated the following themes:

- ◆ CityLabs and Engaged Research
- ◆ Mapping Engaged Research within and across UNIC
- ◆ Learning from Engaged Research Best Practice Showcase
- ◆ Co-Producing a Common Understanding of Engaged Research

A physical meeting was convening in Cork City at University College Cork on 31st of March to the 1st of April 2022 to engage UNIC4ER partners and their stakeholders for a series of consultations to inform drafting of the Joint Declaration of Engaged Research and the UNIC4ER Engaged Research Strategy. This report documents these workshop proceedings for this second phase of the Engaged Research Strategy Forum and will serve as a supplemental deliverable to Deliverable Report 2.1 which was originally submitted to the European Commission on the 31st of January 2022.

C.2 Event Programme

The UNIC Engaged Research Strategy Forum was open to:

- City Stakeholders (Senior Municipal Representative, CSO/NGO Representative)
- Research Support Office Representative
- Senior Academic
- UNIC Student Board Member
- University Community Engagement,
- UNIC4ER Taskforce

The forum consisted of a series of online and in-person events at University College Cork, Ireland 31st March – 1st April 2022 and they were designed to:

- Learn from engaged research best practices,
- Engage City Partners in dialogue with universities and each other on the societal challenges facing their municipalities and regions,
- Prepare a draft Declaration on Engaged Research in advance of signing at the CityLabs Festival in Oulu on the 15th of June 2022.

The UNIC Strategy Forum on Engaged Research brought together UNIC European University colleagues and City Partners for a series of workshops towards developing a Joint Declaration on Engaged Research and a common strategy, framework and supportive systems for involving and engaging citizens, civil society, public & city authorities and academia in joint research and innovation initiatives. We use the term ‘Engaged Research’ as an overarching guiding principle or an umbrella term that describes research approaches that have a common interest in collaborative inquiry with society.



[@unic_eu](#)
[#EngagedResearch](#)



Group photo of UNIC4ER Strategy Forum Delegates in Cork, Ireland at University College Cork.

TUESDAY, MARCH 29TH, 2022

VIRTUAL PRE-FORUM EVENT – Learning from Engaged Research Best Practice

Time	12:30 – 14:30 (CET)
Description	Presentation of Four Best Practice Cases and a Panel Discussion. This ongoing seminar series champions and raises awareness of best practice engaged research exemplars across the UNIC Alliance. This seminar features exemplars from Zagreb, Bochum, Rotterdam and Istanbul.
Attendance	137 people registered for this webinar which was open to all.
Venue	Online
Host / Speakers and Contributors	Moderated by Professor Peter Scholten

PRESENTERS: ENGAGED RESEARCH SHOWCASE AND PANEL DISCUSSION

Vanessa van den Bogaert, Chair for Teaching and Learning Research, Institute for Educational Science, Ruhr University Bochum

‘Citizen Science investigation of Drinking-water of and by the public’

This water quality projects sees citizens of Bochum examining and measuring selected chemical parameters of their drinking water at the "last meter" and to communicate about them together with scientists and municipal partners. For citizen participants, this research project begins at home, at their own water tap and then together with scientists in a real laboratory. The various measurement

data are entered on the openSenseMap (a platform for open sensor data), made available to the public and can be exchanged and discussed in joint events.

CityLabs Challenge: Green Cities, Sustainability

Assistant Prof. Ida Korfhage, Erasmus Medical Centre

‘SamenSpraak’

This research initiative explores manners in which individuals with a mental disability can be included in discussions and decision-making processes in their last phase of life. This includes partners in Ireland, Sweden and France. They are developing knowledge and courses.

UNIC CityLabs Challenge: Health & Wellbeing

Antonija Petričušić, Faculty of Law, University of Zagreb

‘Fostering equality in and by academia’

The presentation asks: “how to foster non-discrimination in academic community and by academic community”? Presentation will focus on efforts and challenges in implementing wide-scope measures to prevent discrimination and foster protection of vulnerable groups. Efforts undertaken by academics and students at the Faculty of Law will be presented, with special emphasis on building relevant curricula, transferring necessary legal knowledge towards the citizens and NGO communities, organizing interest groups capable of advancing their rights and interests and changing institutional culture through self-regulation.

CityLabs Challenge: Diversity & Inclusion

Assistant Prof. Aykut Coşkun, Media and Visual Arts Department, College of Social Sciences and Humanities, Koç University

‘Participatory Futures for Intercultural Meaningful Social Interactions in Public Places of Istanbul’

This research explores how design and technology can facilitate meaningful social interactions between intercultural strangers in public places of Istanbul as a way of promoting social inclusion and decreasing prejudices in intercultural contexts. The research methodology is inspired by participatory design and futures studies, hence, analysing what participants from different cultural backgrounds

can imagine for the future of intercultural contact and, from there, proposing ideas of how future technology could facilitate that contact. Therefore, the primary goal of the research is to create a framework about Intercultural Meaningful Social Interactions and their characteristics according to participants' experiences and transfer this framework to design tools that participants use to inspire such technological ideas.

UNIC CityLabs Challenge: Diversity & Inclusion

Associate Prof. Ceren Acartürk, College of Social Sciences and Humanities, Koç University

'Scaling up Psychological Interventions with Syrian Refugees'

Turkey hosts the highest number of Syrian refugees worldwide. Most of the Syrian refugees live in Istanbul. Due to the conflict related traumatic experiences and displacement related stressors, refugees have higher risk to develop common mental health problems than the general population. Although mental health disorders are highly prevalent among Syrian refugees, majority of them do not utilize mental health services due to structural (e.g., treatment cost, costs of attending treatment, lack of information, language barrier) and attitudinal (e.g., stigma and unfamiliarity with treatment) barriers which indicates the major treatment gap. Therefore, those who are in need most do not receive the necessary treatment. As a part of mhGAP action program, the World Health Organization (WHO) developed several psychological interventions to address this mental health gap and Problem Management Plus (PM+) is one of those interventions that is brief and transdiagnostic, and can be delivered by lay helpers. The STRENGTHS (Fostering responsive mental health care systems in the Syrian refugee crisis) project aims to evaluate the effectiveness and cost-effectiveness of the different modalities of PM+ among Syrian refugees in some neighbouring and European countries. In Turkey, the effectiveness of Group PM+ is being investigated in Sultanbeyli district of Istanbul in collaboration with Refugees and Asylum Seekers Assistance and Solidarity Association (RASASA). RASASA as a local actor plays a key role in recruitment, implementation, and the dissemination in addition to being a bridge between the academicians and policy makers. Before the larger trial, the pilot study has been conducted in which the participants reported that the Group PM+ is feasible and culturally acceptable. The recruitment and data collection for the main randomized controlled trial (RCT) has been completed with 369 included participants. The results are under investigation.

STRENGTHS Website: <http://strengths-project.eu/en/strengths-home/>

UNIC CityLabs Challenge: Diversity & Inclusion

THURSDAY, March 31st, 2022

Session 1 – UNIC European Cities: Exploring the Societal Challenges facing Post-Industrial Cities

Time	9:30 to 13:00 (IST)
Venue	UCC Student Hub, Dora Allman Room
Description	This session aimed to advance city stakeholder involvement in UNIC. It will focus on the identification of societal challenges and related research needs linked to the Urban Agenda for the EU. An outcome will be progress towards research roadmaps between cities and universities and joint research acquisition strategies
Delegate Groups Attending (people)	<ul style="list-style-type: none">◆ City Stakeholders (Municipal Representative and CSO/NGO representative)◆ Director or Vice-Rector of Research or Senior Research Support Office Representative◆ Senior Academic Representative◆ Community Engagement Leaders◆ UNIC Student Board◆ UNIC Director & Project Manager◆ UNIC4ER Taskforce
Speakers / Contributors	Martin Galvin (UCC), martin.galvin@ucc.ie

List Names, Affiliation and Contact

John Barimo (UCC), john.barimo@ucc.ie

Ciara O'Halloran (UCC), ciara.ohalloran@ucc.ie

Sari Hirvonen-Kantola (Oulu)

John Cryan (UCC VP Research & Innovation)

Alicia O'Sullivan (UCC Student Board)

Jack Lehane (UCC Student Board)

Hazel Hurley (Graphic Harvester)

Nadia Nechuiviter (Photographer)

UNIC4ER Taskforce members

Mair Kelly (UCC Student)

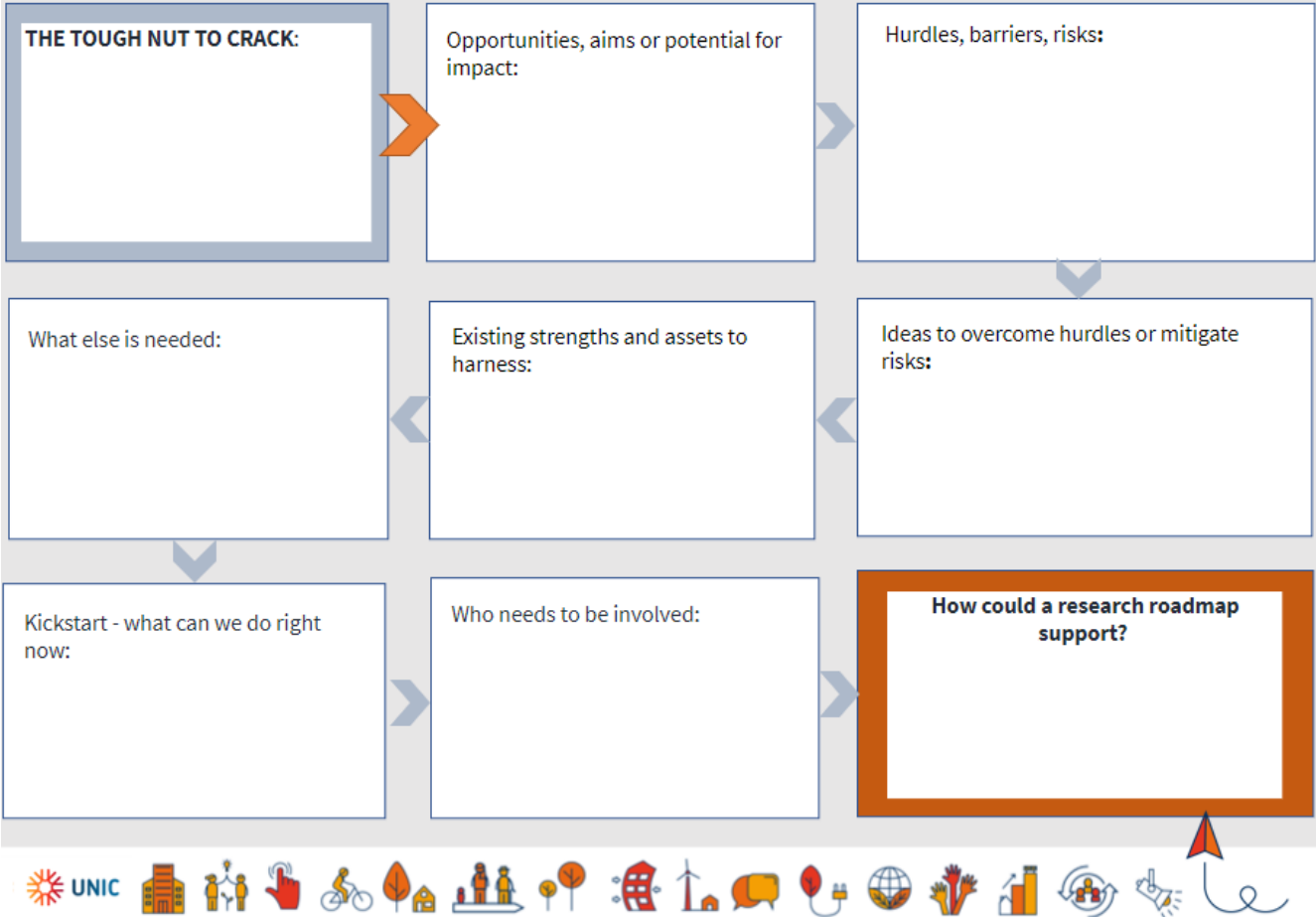
Summary of Session 1

The UNIC4ER Strategy Forum was launched by University College Cork and Dr. Martin Galvin with a call to action to emphasize the responsibility of being a 'Delegate', European Solidarity and Cohesion, and the significance of EU Flag Flying over the UCC campus this week. The next agenda item was an ice breaker where delegates took turns interviewing their *Partner* as a person who lives or works in the *City* to get a glimpse of their City as seen from a different perspective.

A presentation on Learning from Engaged Research Best Practice was integrated into this session and featured a presentation by Professor Ó Gallachóir who is the principal investigator on the [Dingle 2030 project](#). This short ongoing project aims to create a just transition to carbon neutrality in a remote region in the West of Ireland and was followed by a lengthy discussion.

The next exercise was a viewing a poster session, comprising a City and a University Poster from each consortium member. UNIC4ER Taskforce members coordinated an A3 sized poster of their respective university highlighting key research strengths; strategic research priorities; and key societal challenges or policy drivers that shape research priorities. In a separate A3 sized poster, the City articulated key competitive strengths; research networks, alliances or organizational structures; pressing issues; and 10 most important challenges to be worked through collaboration. Both city and university posters articulated a "Tough Nut to Crack" which highlighted a significant issue that would benefit from collaboration across UNIC by a number of stakeholders within academic, government,

business and the NGO/CSO sectors. Copies of these posters are found in Appendix A. This exercise created lively conversations as delegates toured the various city-university pairs. Subsequent breakout discussion tables were then organized so that city-university pairs or specific job functions were not clustered to maximize mixing of delegates. In these breakout groups, delegates were asked to select a ‘Tough nut to crack’ and to create a ‘Roadmap’ for working together in a Transnational and Transdisciplinary way to address this challenge or issue through engaged research and / or innovation.



Worksheet template used by breakout groups during session 1 of the Strategy Forum.



Workshop 1 Graphic Harvest by Hazel Hurley



THURSDAY March 31st

Session 2 – Towards a draft Declaration on Engaged Research

Time	14:30 to 17:30 (IST)
Venue UCC Student Hub, Dora Allman Room	UCC Student Hub, Dora Allman Room
Description	This session aimed to advance the co- production of a common understanding of Engaged Research within and across the UNIC cities and considers the development of a draft Declaration on Engaged Research.
Delegate Groups Attending (people)	<ol style="list-style-type: none">1.UNIC4ER Taskforce (c12)2.City Stakeholders (Senior Municipal Representative & CSO/NGO representative)3.Director or Vice-Rector of Research or Senior Research Support Office Representative.4.Senior Academic Representative.5.Community Engagement Leaders6.UNIC Student Board7.UNIC Director & Project Manager
Speakers / Contributors List Names, Affiliation and Contact	Martin Galvin (UCC), martin.galvin@ucc.ie John Barimo (UCC), john.barimo@ucc.ie Ciara O’Halloran (UCC) ciara.ohalloran@ucc.ie

	Hazel Hurley UNIC4ER Taskforce Members Nadia Nechuiviter
--	--

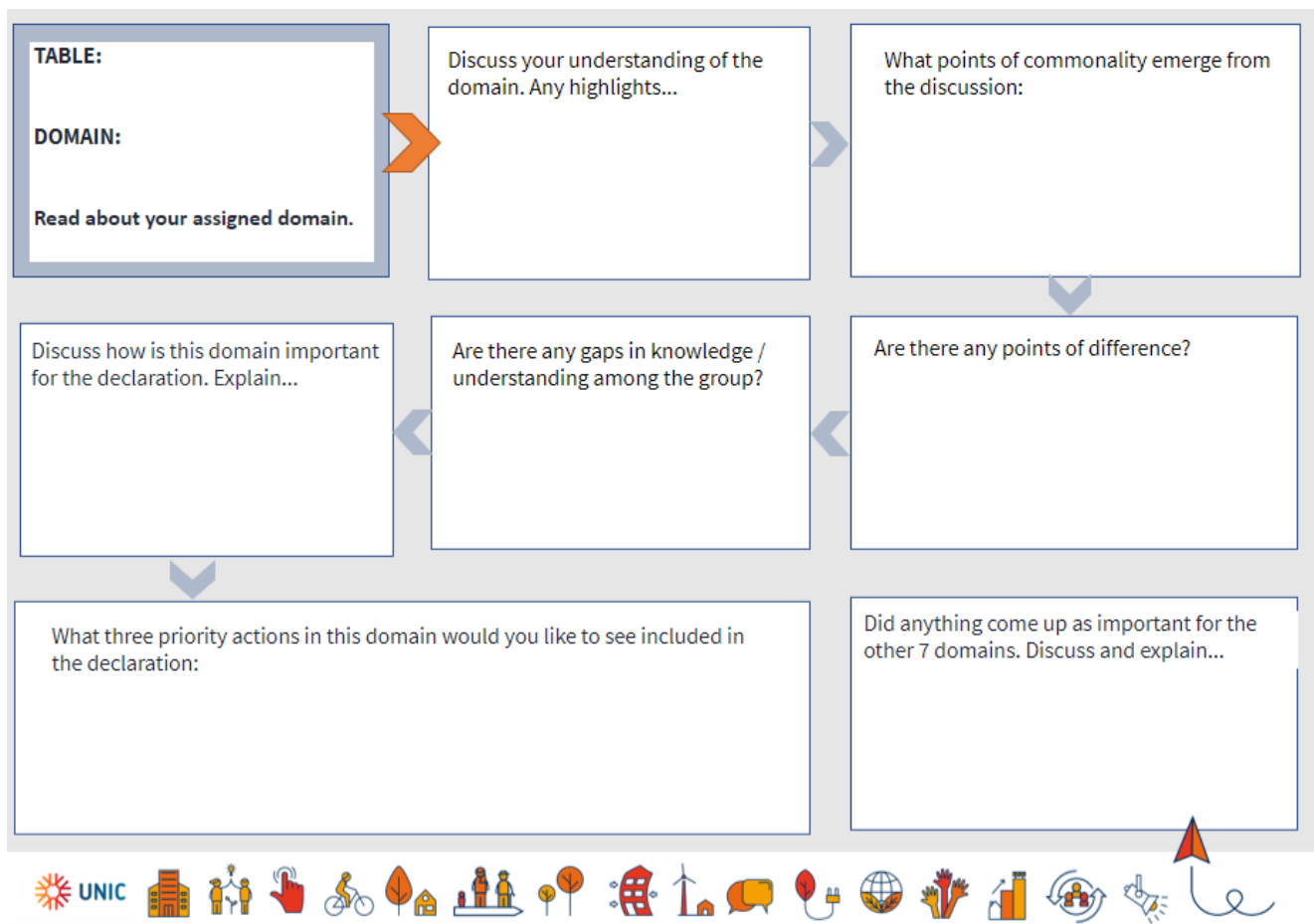
Summary of Session 2

Task 1. Small breakout groups were provided with a series of principles / values prompts and delegates were asked to pick one or more principle/ value prompt they felt was important to share with their group and say why they picked it. Groups were then asked, "What's missing?" Group members are asked to create / add a written prompt and tell their group why it is important. Groups then synthesized their inputs and create a concise list of 3-5 priority principles and values for reporting out by the UNIC4ER Taskforce member. These were recorded on the worksheet shown in the image below.

What's missing?	Priority Principles	Priority Values
------------------------	----------------------------	------------------------



Task 2. Delegates were next asked to consider actions to include in the joint declaration for engaged research. Breakout tables were then assigned one of the 8 meta-framework domains that together characterize the UNIC4ER programme. Groups were directed to explore their domain and discuss what it means in the context of engaged research. They then recorded commonalities, differences and gaps in knowledge or understanding amongst their group members. Next, they explored what their group considered as the top 3 actions in this domain to be progressed by UNIC4ER. Groups were guided and discussions recorded using the worksheet shown below.





Workshop 2 Graphic Harvest by Hazel Hurley which also captures key concepts reported by delegates after their breakout groups sessions.



FRIDAY APRIL 1st

Session 3 - UNIC4ER Meets the City

Time	10:00 to 13:00 (IST)
Venue	Irish Management Institute, 1 Lapp's Quay, Centre, Cork
Description	This session aims to promote universities working with their cities on collaborative engaged research initiatives and to ensure that these initiatives (such as research, development and innovation projects) serve our city organisations' actual development needs in either short or long term. More detailed Local Engaged Research Roadmap work process is initialized in this workshop.
Delegate Groups Attending (people)	<ul style="list-style-type: none">◆ City Stakeholders (Senior Municipal Representative and CSO/NGO representative)◆ Director or Vice-Rector of Research or Senior Research Support Office Representative◆ Community Engagement Leaders◆ UNIC4ER Taskforce
Speakers / Contributors List Names, Affiliation and Contact	<ol style="list-style-type: none">1. Dr. Sari Hirvonen-Kantola (UOULU), Sari.Hirvonen-Kantola@oulu.fi2. 1 spokesperson per city team

Summary of Session 3

This workshop served as the basis of inspiration for collaborative engaged research initiatives between UNIC partners and their city partners. It further aimed to serve as a platform for discussions with city organizations and initiate the development of detailed local engaged research roadmaps.

1. Task 1 - round table discussion by city teams: Review of the 10 urban development priorities presented in Workshop 1 Poster Session - Exploring the Societal Challenges facing Post-Industrial Cities.
2. Task 2 – round table for the identification of the current bodies (organisations) (1) facilitating intervention planning processes and (2) decision-making on investments, by the 10 urban development priorities.
3. Task 3 - Round table discussion by city teams: SWOT analysis on how incoming engaged research initiatives (concerning the 10 urban development priorities) are currently processed in practice.
4. Task 4 - Round table discussion by city teams: Identification of 3 questions* to be solved, in how to reach and commit the leaders of the 10 urban development priorities, to join collaborative engaged research initiatives.

Worksheet used during these tasks are presented below.

CITY TEAM:	TOP TEN MOST IMPORTANT CHALLENGES AND THEIR KEY PLAYERS
SPOKESPERSON:	Challenge 1: Intervention planner(s): _____ Decision-maker on investing: _____
SECRETARY:	Challenge 2: Intervention planner(s): _____ Decision-maker on investing: _____
	Challenge 3: Intervention planner(s): _____ Decision-maker on investing: _____
	Challenge 4: Intervention planner(s): _____ Decision-maker on investing: _____
	Challenge 5: Intervention planner(s): _____ Decision-maker on investing: _____
	Challenge 6: Intervention planner(s): _____ Decision-maker on investing: _____
	Challenge 7: Intervention planner(s): _____ Decision-maker on investing: _____
	Challenge 8: Intervention planner(s): _____ Decision-maker on investing: _____
	Challenge 9: Intervention planner(s): _____ Decision-maker on investing: _____
	Challenge 10: Intervention planner(s): _____ Decision-maker on investing: _____

CITY TEAM:	HOW INCOMING / DEVELOPED ENGAGED RESEARCH INITIATIVES ARE NOW PROCESSED BY THE CITY / MUNICIPALITY ORGANISATION:							
SPOKESPERSON:	<div style="display: flex; justify-content: space-between;"> <div style="width: 45%;"> 3 KEY QUESTIONS TO BE SOLVED, IN HOW TO REACH AND COMMIT THE LEADERS OF THE URBAN DEVELOPMENT PRIORITIES, TO JOIN COLLABORATIVE ENGAGED RESEARCH INITIATIVES 1. _____ 2. _____ 3. _____ </div> <div style="width: 45%;"> <table border="1" style="width: 100%;"> <tr> <th style="background-color: #003366; color: white;">STRENGTHS</th> <th style="background-color: #003366; color: white;">WEAKNESSES</th> </tr> <tr> <td>1. _____</td> <td>1. _____</td> </tr> <tr> <td>2. _____</td> <td>2. _____</td> </tr> </table> </div> </div>		STRENGTHS	WEAKNESSES	1. _____	1. _____	2. _____	2. _____
STRENGTHS			WEAKNESSES					
1. _____			1. _____					
2. _____	2. _____							
SECRETARY:								
	<table border="1" style="width: 100%;"> <tr> <th style="background-color: #003366; color: white;">OPPORTUNITIES</th> <th style="background-color: #003366; color: white;">THREATS</th> </tr> <tr> <td>1. _____</td> <td>1. _____</td> </tr> <tr> <td>2. _____</td> <td>2. _____</td> </tr> </table>	OPPORTUNITIES	THREATS	1. _____	1. _____	2. _____	2. _____	
OPPORTUNITIES	THREATS							
1. _____	1. _____							
2. _____	2. _____							

Further Information

Key Contacts:

Dr David O’Connell UNIC4ER UCC Co-PI and UCC Research Director david.oconnell@ucc.ie

Dr Martin Galvin UNIC4ER UCC Co-PI and Head of UCC Civic & Community Engagement
martin.galvin@ucc.ie

Dr John Barimo UNIC4ER Engaged Research Officer john.barimo@ucc.ie

Ciara O’Halloran UNIC CityLabs Project Support Officer ciara.ohalloran@ucc.ie

Appendix D

D.1 Posters detailing societal challenges of each UNIC city-university pair.

<p>CITY: Bochum UNIVERSITY: Ruhr-Universität Bochum STUDENT POPULATION: 42.500</p>	<p>OUR STRATEGIC RESEARCH PRIORITIES</p> <ol style="list-style-type: none"> 1. Sustainability (sustainable chemistry, energy transition, CO2 independence, green city) 2. IT & AI in socio-technical contexts 3. Mental Health 4. Future Energy Materials 5. Digital and Virtual Humanities (Religious Studies, Gender and Media studies) 6. Diversity Studies (Urban, Gender, Cultural Studies) 7. Participative research <p>Structural approaches:</p> <ol style="list-style-type: none"> a. Student Research Experience (research oriented L&T) b. Graduate School of Educational Studies c. Worldfactory (entrepreneurship program) 	<p>THE KEY SOCIETAL CHALLENGES OR POLICY DRIVERS THAT SHAPE OUR RESEARCH PRIORITIES</p> <ol style="list-style-type: none"> 1. Digitalization 2. Sustainability (mobility, energy) 3. Diversity 4. Entrepreneurship & innovation 5. Open science (RRI)
<p>OUR KEY RESEARCH STRENGTHS</p> <ol style="list-style-type: none"> 1. Solvation Science; Chemistry innovation 2. Data Sciences, especially IT Security 3. interdisciplinary Neuroscience (medicine, biology, psychology, philosophy) 4. Material Science and engineering 5. Physics (Plasma physics / Astrophysics) 6. The Humanities: e.g. Religious Studies, Media/Cultural Studies, Philosophy 7. Protein Research 	<p>A TOUGH NUT TO CRACK</p> <p>Welcoming Refugees & Immigrants remains a challenge for both city and university administrations. Exchange between partner universities, between their cities, and between the cities and the universities, will help to improve the procedures in cities' resident registration offices and in universities' welcome centers. To organize the arrival and integration processes smoother and more supportive, city and university administrators could share examples of successful collaboration and brainstorm for new solutions.</p>	



<p>CITY: Bochum, Germany POPULATION: around 370.000 CITY KNOWN FOR: Innovation Campus MARK 51'7</p>	<p>WHAT ARE THE MOST PRESSING ISSUES FACING YOUR CITY OR REGION?</p> <ol style="list-style-type: none"> 1. Climate Change & Sustainability 2. Urban Mobility 3. Digitalization 4. Civil protection and disaster prevention 5. Integration 	<p>WHAT ARE THE TOP TEN MOST IMPORTANT CHALLENGES YOU WOULD LIKE TO WORK ON THROUGH RESEARCH COLLABORATION. THESE SHOULD BE ALIGNED WITH CITY OR REGIONAL POLICY DOCUMENTS OR STRATEGIES</p> <ol style="list-style-type: none"> 1. Society 5.0 2. Sustainable city & urban development 3. Smart city 4. Sustainable, barrier-free and smart mobility 5. Civil protection and disaster prevention 6. Cross-cultural knowledge transfer 7. Digitalization of administration and society 8. International economic relations 9. Internationalization & international networking 10. Joint Projects with research institutions
<p>WHAT ARE YOUR CITY OR REGIONS KEY COMPETITIVE STRENGTHS?</p> <ol style="list-style-type: none"> 1. Transformation into an information- and science-driven society 2. Knowledge as the key for transformation 3. Change as our way of life 4. Solidarity as our attitude towards life 5. Industry sectors: IT security, research institutions, health care 	<p>A TOUGH NUT TO CRACK</p> <p>Collaboration/exchange across UNIC Alliance which focusses on the innovative concept of an increasingly digitized "Smart City administration", in which the different dimensions of the Society 5.0 concept are applied: Smart People, Smart Economy, Smart Governance, Smart Mobility, Smart Environments and Smart Living.</p>	
<p>WHAT RESEARCH NETWORKS, ALLIANCES OR ORGANISATIONAL STRUCTURES DOES YOUR CITY HAVE?</p> <ol style="list-style-type: none"> 1. Bochum Strategy 2030 2. Smart City Innovation Unit 3. UniverCity Bochum 4. Ruhr Metropolis with it's Regional Association Ruhr 5. EUROCITES 		



CITY: Bilbao
UNIVERSITY: University of Deusto
STUDENT POPULATION: 10.661

OUR KEY RESEARCH STRENGTHS

24 Excellent Research Teams

Social Values / Leisure/ Tourism / Communication / INTERVENTION / eDucaR / Human Rights / Public & Transnational Law / Social Innovation / European Integration / Ethics
 Innovation & Business / Competitiveness / Cooperativism & Social Protection
 DeusTek – Smart Technologies / Smart Mobility / Applied Mechanics / e-Life / Neuropsychology / Stress / LabPsycho / Neuro-e-Motion / FamilyPsych / Clinical Assessment

working together in 5 interdisciplinary platforms

Aging & Wellbeing
 B-Creative – Creative Industries & Cities
 Gender
 Social Justice & Inclusion
 Strengthening – Promotion of Participation

OUR STRATEGIC RESEARCH PRIORITIES

Based on Collaboration and Participation (Engaged Research)

1. Internationalization
2. Interdisciplinarity
3. Intersectorality
4. Impact: Scientific and societal
5. Innovation
6. Inclusion

THE KEY SOCIETAL CHALLENGES OR POLICY DRIVERS THAT SHAPE OUR RESEARCH PRIORITIES

1. Science, Technology and Innovation Plan 2030 of the Basque Government. PCTI 2030.
2. Regional Innovation Strategy for Smart Specialization. RIS3.
3. Recovery, Transformation and Resiliency Plan. Spanish Government.
4. Sustainable Development Goals. SDG

A TOUGH NUT TO CRACK

University of Deusto’s research strategy and its implementation is understood as an engaged research process itself and therefore, a challenge because its main outcome is the transformation of our city.



<p>CITY: Bilbao POPULATION: 346.000 inhabitants CITY KNOWN FOR: Urban transformation to survive from the industrial, economic, social environmental and cultural crisis of the early 80's</p>	<p>WHAT ARE THE MOST PRESSING ISSUES FACING YOUR CITY OR REGION?</p> <ol style="list-style-type: none"> 1. Population ageing 2. Digital Gap 3. Social Cohesion 4. The economic development of the sectors affected by COVID 5. Sustainability 	<p>WHAT ARE THE TOP TEN MOST IMPORTANT CHALLENGES YOU WOULD LIKE TO WORK ON THROUGH RESEARCH COLLABORATION. THESE SHOULD BE ALIGNED WITH CITY OR REGIONAL POLICY DOCUMENTS OR STRATEGIES</p> <ol style="list-style-type: none"> 1. To increase socially and in a more cohesive way our city 2. To improve the sustainability of the city 3. To continue developing a city that is even more attractive for investment and employment generation 4. To strength the equality between women and men 5. To keep on providing quality services that cover all neighborhoods
<p>WHAT ARE YOUR CITY OR REGIONS KEY COMPETITIVE STRENGTHS?</p> <ol style="list-style-type: none"> 1. STRATEGIC LOCATION 2. INNOVATION AND TECHNOLOGICAL ECOSYSTEM 3. FINANCIAL/TAX AUTONOMY 4. HIGHLY-QUALIFIED POPULATION 5. HIGH QUALITY OF LIFE 	<p>A TOUGH NUT TO CRACK</p> <ol style="list-style-type: none"> 1. ZORROTZAURRE ISLAND 2. BILBAO CITY OF VALUES 3. BILBAO INTERCULTURAL CITY 	
<p>WHAT RESEARCH NETWORKS, ALLIANCES OR ORGANISATIONAL STRUCTURES DOES YOUR CITY HAVE?</p> <ol style="list-style-type: none"> 1. BASQUE Center for Applied maths http://www.bcamath.org/es/ 2. Bizkaia Talent https://www.bizkaialalent.eus/en/?cl= 3. Ikerbasque, Basque Foundation for Science https://www.ikerbasque.net/ 		



CITY: Cork, Ireland
UNIVERSITY: University College
 Cork
STUDENT POPULATION: 23,000

OUR KEY RESEARCH STRENGTHS

1. Radical Humanities Laboratory
2. Artificial Intelligence & Data Analytics
3. Sustainability
4. Future Medicines
5. Children
6. Food, Microbiome & Health
7. Pharmaceuticals
8. Aging
9. Quantum & Photonics
10. Collective Social Futures

UCC Futures Institutes

OUR STRATEGIC RESEARCH PRIORITIES & UNDERPINNING ENABLERS

1. Chronic & Infectious Diseases
2. Human Health, Activity & Social Wellbeing across the Lifespan
3. Food & Health
4. Future & Emerging Technologies
5. Innovation in Teaching & Learning
6. Sustainability & Climate Action
7. Creative & Engaged Citizenship
8. Culture, Society, Rights & Identities
9. Gender, Equality & Diversity
10. Financial & Business Services
11. Open Research

THE KEY SOCIETAL CHALLENGES OR POLICY DRIVERS THAT SHAPE OUR RESEARCH PRIORITIES

1. U.N. Sustainable Development Goals
2. European Charter and Code for the Recruitment of Researchers & Athena SWAN
3. Horizon Europe
4. Ireland's National Strategy for Higher Education 2030
5. Ireland's National Skills Strategy
6. National Research & Innovation Strategy [launch April 2022]

A TOUGH NUT TO CRACK

Ireland and Cork have low levels of housing construction causing a housing crisis. Ireland is expecting over 140,000 Ukrainian refugees in 2022. How do we respond with adequate housing, mental and physical health services, education, and other basic services?



CITY: Cork, Ireland
POPULATION: 210,000 City/300,000 Metropolitan Area
CITY KNOWN FOR: Cork Harbour World's 2nd largest natural harbour

WHAT ARE YOUR CITY OR REGIONS KEY COMPETITIVE STRENGTHS?

1. Economy: Port of Cork, pharma, bio-pharma, healthcare & life sciences, IT, agriculture, food financial services, energy & marine, leisure & tourism
2. Knowledge: Universities research & innovation base
3. Energy: significant renewables potential.
4. Culture: Employment in heritage, arts, culture & sport is double the national average.
4. Quality of Life & Cohesion: Irish Language Regions, friendliness, strong communities,
5. Space: e.g. City Brownfields - Port redevelopment

WHAT RESEARCH NETWORKS, ALLIANCES OR ORGANISATIONAL STRUCTURES DOES CORK HAVE?

1. Cork City & County Public Participation Network
2. Cork Smart Gateway (Smart Cities), Chambers of Commerce, [IT@Cork](#), Cork Innovates, Energy Cork, Regional Skills Fora, UCC Innovation
3. Cork Healthy Cities, Age Friendly City and County, Cork UNESCO Learning City, Cork Access Network, Cork Food Policy Council.
4. UCC Civic & Community Engagement (Outreach and Partnerships).
5. SECAD Partnership and Cork Partnership, LCDC's,

WHAT ARE THE MOST PRESSING ISSUES FACING YOUR CITY OR REGION?

1. *Transition to a low carbon and climate resilient society, reducing energy usage and emissions, adapt/mitigate flood risk*
2. *Protect and expand Green infrastructure, sustainable modes of transport and integration of land use and transportation*
3. *Strengthened rural economies and communities, social inclusion.*
4. *Centre City revitalisation,*
5. *Diversifying economy and growing indigenous economy sector*

A TOUGH NUT TO CRACK

Ireland is expected to welcome over 140,000 Ukrainian refugees in 2022, a significant number will come to the Cork Region. How do we share and learn from international good practice, how are we outreaching and coordinating as cities, how do we enable people and civil society partners to respond, how can universities collaborate, how do we ensure quality housing, mental & physical health services, education, & other services in a responsive manner? What don't we know, how do we ensure impact & capture learning.

WHAT ARE THE TOP TEN MOST IMPORTANT CHALLENGES YOU WOULD LIKE TO WORK ON THROUGH RESEARCH COLLABORATION. THESE SHOULD BE ALIGNED WITH CITY OR REGIONAL POLICY DOCUMENTS OR STRATEGIES

1. Compact growth
2. Enhanced regional accessibility
3. Strengthened rural economies and communities
4. Sustainable mobility
5. A strong economy, supported by enterprise, innovation and skills
6. High-quality international connectivity
7. Enhanced amenity and heritage
8. Transition to a low carbon and climate resilient society
9. Sustainable management of water and other environmental resources
10. Access to quality childcare, education and health services



CITY: Rotterdam
UNIVERSITY: Erasmus University
STUDENT POPULATION: 39,150

OUR KEY RESEARCH STRENGTHS

1. Strong impact-driven agenda
2. Emphasis on diversity and inclusion in research teams and processes
3. Increased transdisciplinary approaches to research
4. Transition to conducting more team science
5. Changing recognition and rewards systems to support engaged research
6. Open and responsible science

OUR STRATEGIC RESEARCH PRIORITIES

1. Dynamics of Inclusive Prosperity
2. Smarter Choices for Better Health
3. Vital Cities, Vital Citizens
4. Artificial Intelligence, Data and Digitalisation
5. Resilient Delta
6. Health and Technology
7. Pandemic and Disaster Preparedness



THE KEY SOCIETAL CHALLENGES OR POLICY DRIVERS THAT SHAPE OUR RESEARCH PRIORITIES

1. Public health
2. Inclusion and diversity
3. Sustainable growth
4. Digital transitions
5. Energy transitions

A TOUGH NUT TO CRACK

1. *External:* Identifying a strategic entry point within a fragmented city organisation
2. *Internal:* Strategically encouraging engaged research practices, but limited concrete organisational structures to facilitate it



<p>CITY: Rotterdam POPULATION: 623.652 CITY KNOWN FOR: Largest port in Europe + modern architecture</p>	<p>WHAT ARE THE MOST PRESSING ISSUES FACING YOUR CITY OR REGION?</p> <ol style="list-style-type: none"> Socio-economic insecurity and inequality: structural differences between groups in health, education, income, social capital etc. Rising housing and energy costs, contributing to inequality Spiral of problems in a few neighbourhoods: poverty, low social cohesion and trust, unsafety, low quality of housing, lack of greenspace, impact of COVID-19 etc. Need for transition towards a future-oriented economy with sustainable jobs Pressure on vital infrastructure due to spatial competition, demands of transitions and fragmentation of responsibilities 	<p>WHAT ARE THE TOP TEN MOST IMPORTANT CHALLENGES YOU WOULD LIKE TO WORK ON THROUGH RESEARCH COLLABORATION. THESE SHOULD BE ALIGNED WITH CITY OR REGIONAL POLICY OR STRATEGIES</p> <ol style="list-style-type: none"> Promoting social cohesion and participation in neighbourhoods with high degree of residential mobility Fighting drug crime, international trafficking networks and the allure of drug crime-related activities on young, disadvantaged groups Breaking the cycle of intergenerational poverty, health problems and low education Invention of new economic models and labour market/life long learning opportunities, geared for sustainability, inclusivity & broad prosperity Strengthening modern governance structures with (semi)-private partners, societal organizations and citizen initiatives Creating innovative housing models, in order to fight shortage, rising prices & climate change risks Climate change adaptation (resilience to heat, rising water levels, subsidence) and the Inclusion of vulnerable groups in the transition towards sustainability Upholding public values in the realm of digitalization and artificial intelligence Understanding everyday experiences of unsafety, and develop policies fighting it Preventing isolation and radicalization of groups with low trust in government, influenced by disinformation, social media and conspiracy theory
<p>WHAT ARE YOUR CITY OR REGIONS KEY COMPETITIVE STRENGTHS?</p> <ol style="list-style-type: none"> Port infrastructure and mobility networks with region and Europe Young population Network of knowledge and research institutions Spirit of innovation and entrepreneurship Diversity and international orientation 	<p>A TOUGH NUT TO CRACK</p> <p>In Rotterdam, there are some disadvantaged neighbourhoods (Tarwewijk, Carnisse) with a high degree of residential mobility (due to cheap, low-standard housing), and a large amount of residents with migrant backgrounds, low ties to the community and imperfect understanding of the Dutch language. Classic strategies to promote social cohesion and participation in those areas bear little fruit. It could be useful to learn from and with other cities about innovative policies regarding this issue.</p>	
<p>WHAT RESEARCH NETWORKS, ALLIANCES OR ORGANISATIONAL STRUCTURES DOES YOUR CITY HAVE?</p> <ol style="list-style-type: none"> Convergence EUR-TU-EMC 'Knowledge labs' concerning different themes (livable neighbourhoods, public health, urban big data etc.) Resilient Cities Network RUGGEDISED SmartPort 		

CITY: ISTANBUL
UNIVERSITY: KOÇ UNIVERSITY
STUDENT POPULATION: 8.800

OUR KEY RESEARCH STRENGTHS

1. Faculty Profile + supporting infrastructure (commitments given by EURAXESS HRS4R)
2. Research Support Office supporting during the project lifecycle
3. Sustainable research approach built around research centers
4. Commercialization of support (supports of Koç University Entrepreneurship Research Center)
5. 25 research centers focusing on themes such as, Gender, Migration, Social Policy, Civil Society and Philanthropy, Entrepreneurship, Artificial Intelligence, Nanofabrication and Nanocharacterization

OUR STRATEGIC RESEARCH PRIORITIES

1. Turkish Research Council prioritizes 9 research fields under technology, engineering, social sciences and health, ex “Artificial Intelligence and Machine Learning”, “SDG”, “Infectious Diseases”
2. Coaching the researchers, researcher-funding matching service
3. Increasing performance in Horizon 2020
4. Increasing the # of ERCs
5. Increasing # of consortium projects
6. Financial incentives for faculty members, external consultant support
7. Transforming knowledge and experience into economic value
8. Establishing a strong University-Industry cooperation infrastructure (organizing research activities around KU research centers to develop Technologies)
9. Producing solutions to social, economic and technological problems with stakeholders (NGOs, cities, private companies)
10. Gaining power in the international arena in the light of science and technology

THE KEY SOCIETAL CHALLENGES OR POLICY DRIVERS THAT SHAPE OUR RESEARCH PRIORITIES

1. Being an officially accredited research university at national and international levels
2. Improving human resources policies for researchers following the HR Excellence in Research Award given by European Commission
3. Developing Koç University’s Gender Equality Plan
4. Deepening scale of the existing societal challenges at local and global levels; including migration, poverty, inequality, pollution
5. Raising the level of awareness about the importance of engaged research

A TOUGH NUT TO CRACK

Increasing the resilience of the city via strengthening diversity and inclusion, especially for refugees and international migrants; increasing the resilience of the city to face challenges stemming from climate change



<p>CITY: Istanbul POPULATION:15.462.452 CITY KNOWN FOR:A city connects two continents</p>	<p>WHAT ARE THE MOST PRESSING ISSUES FACING YOUR CITY OR REGION?</p> <ol style="list-style-type: none"> 1. Risk of Earthquake 2. Migration 3. Heavy Traffic 4. Deepening poverty 5. Climate crises 	<p>WHAT ARE THE TOP TEN MOST IMPORTANT CHALLENGES YOU WOULD LIKE TO WORK ON THROUGH RESEARCH COLLABORATION. THESE SHOULD BE ALIGNED WITH CITY OR REGIONAL POLICY DOCUMENTS OR STRATEGIES</p> <ol style="list-style-type: none"> 1. Building resilience 2. Social cohesion and co-habitation 3. Local democracy and participatory city management 4. Circular city 5. Heavy traffic, public transport and micro-mobility 6. Social solidarity and sustainable social support 7. Participation of youngsters in decision making 8. Design for public good 9. Strengthening Creative sectors 10. Boosting innovation and entrepreneurship
<p>WHAT ARE YOUR CITY OR REGIONS KEY COMPETITIVE STRENGTHS?</p> <ol style="list-style-type: none"> 1. Strong economic potential 2. Young population 3. Ambitious local authority 4. Multiculturalism 5. Tourism 	<p>A TOUGH NUT TO CRACK</p> <p>Istanbul is committed to being a carbon-neutral and resilient city by 2050 in line with Vision 2050 Strategy and established a civic mechanism for a shared wisdom and monitoring structure named Istanbul Climate Platform. Good practices for citizen science, open-innovation kind of public participation tools on climate action like climate ambassadors would be beneficial to collaborate with UNIC partners.</p>	
<p>WHAT RESEARCH NETWORKS, ALLIANCES OR ORGANISATIONAL STRUCTURES DOES YOUR CITY HAVE?</p> <ol style="list-style-type: none"> 1. B40 – Balkan Cities Network (Permanent secretariat at IMM) 2. Eurocities 3. UCLG 4. C40 5. Metropolis 		



CITY: Liège
UNIVERSITY: Liège University
STUDENT POPULATION: 26,863

OUR KEY RESEARCH STRENGTHS

1. 3,079 staff members who carry out research activities in 55 research units.
2. 2,127 research agreements, of which 1,493 with at least one international partner.
3. 1,231 patents granted; 527 technology transfer agreements; 101 active spin-offs.
4. 15 library locations; 4 campuses; 11 faculties.
5. ECTS, Diploma Supplement, and HR Strategy for Researchers.

OUR STRATEGIC RESEARCH PRIORITIES

1. Contribution to Society.
2. Integrity, Humanity and Freedom.
3. Audacity (think outside the box) and Responsibility.
4. Open Science, Science for All.
5. Open, Transparent and Merit Based Recruitment of Researchers (OTM-R).
6. Gender Equality.
7. Improve the quality of the working environment for researchers.
8. Boosting doctoral training and supporting researchers (for the benefit of the researcher).
9. Strengthening excellence in research (for the benefit of the research community).
10. Sharing the knowledge and harbouring innovation (for the benefit of society).

THE KEY SOCIETAL CHALLENGES OR POLICY DRIVERS THAT SHAPE OUR RESEARCH PRIORITIES

1. Diversity integration and social cohesion.
2. Housing, urban sprawl and urban renewal.
3. Energy transition.
4. Social and circular economy, labour market integration and digitalisation.
5. Citizen participation.

A TOUGH NUT TO CRACK

Through the inclusion of refugee researchers & students in our universities, we can truly contribute to the integration of such vulnerable people in our cities.

Collaboration across the UNIC Alliance could bring to the development of shared inclusive frameworks, addressing challenges such as the recognition of qualifications/diplomas, and supporting the development of specific programmes or funding instruments.



<p>CITY: Liège POPULATION: 197,355 CITY KNOWN FOR: Communities of Social Solidarity and Tolerance “l’esprit liégeois”</p>	<p>WHAT ARE THE MOST PRESSING ISSUES FACING YOUR CITY OR REGION?</p>	<p>WHAT ARE THE MOST IMPORTANT CHALLENGES YOU WOULD LIKE TO WORK ON THROUGH RESEARCH COLLABORATION. THESE SHOULD BE ALIGNED WITH CITY OR REGIONAL POLICY DOCUMENTS OR STRATEGIES</p>
<p>WHAT ARE YOUR CITY OR REGIONS KEY COMPETITIVE STRENGTHS?</p>	<ol style="list-style-type: none"> 1. Public spending and governance: structural issues exacerbated by Covid-19 crisis, cyber attacks and floods in the region. 2. Need to ensure the continuity of inclusion and diversity policies. 3. Need to provide accessible and inclusive housing solutions. 4. Need to renovate the energy stock and produce sustainable energy. 5. Need to develop and support new forms of economic activity in the city. 	<ol style="list-style-type: none"> 1. Developing effective long-term strategies for the inclusion of immigrant newcomers and refugees. 2. Fostering an equal access to housing, particularly for vulnerable groups. 3. Fostering an equal and inclusive access to the labour market. 4. Developing innovative plans to support social economy and solidarity. 5. Developing and stimulating citizen participation and engagement. 6. Providing equal access to health and prevention through healthy eating and sport. 7. Combating discrimination and the spread of extreme-right ideas.
<p>WHAT RESEARCH NETWORKS, ALLIANCES OR ORGANISATIONAL STRUCTURES DOES YOUR CITY HAVE?</p>	<p>A TOUGH NUT TO CRACK</p> <p><i>The UNIC network is a crucial opportunity for the transfer of knowledge and the exchange of good practices addressing all societal challenges among post-industrial cities.</i></p> <p><i>In particular, the City of Liège is keen to learn and exchange on how to develop strategies to support the creation of a urban community to bridge the gap between institutions and citizens.</i></p>	



CITY: Oulu
UNIVERSITY: University of Oulu
STUDENT POPULATION: 20 000+

OUR KEY RESEARCH STRENGTHS

1. Dynamic data modelling
2. 6G solutions for data-driven society
3. Strengthening human capabilities in the digital era
4. Digitalized solutions for future healthcare
5. Combatting fibrosis in chronic diseases
6. Arctic interactions, resilience and global change
7. Changing space environment
8. Hydrogen future and sustainable steel
9. Inorganic side streams

The University of Oulu's special strength is bringing science and the different actors of society closer together.

OUR STRATEGIC RESEARCH PRIORITIES

1. Sustainable materials and systems
2. Lifelong health
3. Digitalization and smart society
4. Changing climate and northern environment
5. Understanding humans in change



THE KEY SOCIETAL CHALLENGES OR POLICY DRIVERS THAT SHAPE OUR RESEARCH PRIORITIES

1. We are situated close to the Arctic region, humanity's new frontier.
2. We are pioneers in creating and understanding our digital future.
3. We are committed to promoting the UN's goals of sustainable development.
4. We also feel a responsibility toward the wellbeing of society.

A TOUGH NUT TO CRACK

The demanding conditions of the far north call for

- multidisciplinarity on our way towards smart, sustainable society
- anticipation, attractiveness and agility of the region



<p>CITY: City of Oulu POPULATION: 209 648 CITY KNOWN FOR: Top-notch ICT expertise, well educated population, crazy events</p>	<p>WHAT ARE THE MOST PRESSING ISSUES FACING YOUR CITY OR REGION?</p> <ol style="list-style-type: none"> 1. Businesses' competitiveness and renewal, availability of workforce, accessibility 2. Cultural climate change, internationalisation 3. Attractiveness 4. Human-centric urban development 5. Urban-rural interaction 	<p>WHAT ARE THE TOP TEN MOST IMPORTANT CHALLENGES YOU WOULD LIKE TO WORK ON THROUGH RESEARCH COLLABORATION. THESE SHOULD BE ALIGNED WITH CITY OR REGIONAL POLICY DOCUMENTS OR STRATEGIES</p> <ol style="list-style-type: none"> 1. Well-being: children, young, families, employees, elderly; healthy ageing 2. Vitality: companies, employment, tourism; customer service, anticipation 3. Environment: urban structure, carbon neutrality 4. Culture: cultural climate change; internationalization 5. Urban governance: human-centered services, human resources, corporate governance, public procurement; open governance 6. Education: continuous learning 7. Digitalisation: utilization of the opportunities
<p>WHAT ARE YOUR CITY OR REGIONS KEY COMPETITIVE STRENGTHS?</p> <ol style="list-style-type: none"> 1. High technology: ICT (6G, ubiquitous computing, OuluBot), eHealth, cleantech 2. Well educated population 3. Well-organised smart specialization 4. Secure, good daily life for families 5. Pure arctic nature 	<p>WHAT RESEARCH NETWORKS, ALLIANCES OR ORGANISATIONAL STRUCTURES DOES YOUR CITY HAVE?</p> <ol style="list-style-type: none"> 1. Oulu Innovation Alliance 2. Innovation Ecosystem Agreement Cities 3. Nordic Smart City Network 4. Living in EU: Join, Boost, Sustain 5. Eurocities, C21 	



CITY: Zagreb
UNIVERSITY: UNIZG
STUDENT POPULATION: ≈68 000

OUR KEY RESEARCH STRENGTHS

1. Comprehensiveness
2. Strong SSH + Arts
3. „One stop shop” – availability of infrastructure and knowledge at the same place
4. Strong principle of academic freedom → high diversity of scientific expertise
5. Strong basic science

OUR STRATEGIC RESEARCH PRIORITIES

1. Internationalization
2. Balanced development
3. (Re)building of research infrastructure
4. Increasing focus on project based research
5. Increasing the presence of research in wider society
6. Increasing innovations and technology transfer focus
7. Open science and responsible research
8. Building research synergies within the university
9. Increase in productivity
10. Development of new career development programme for young researchers

THE KEY SOCIETAL CHALLENGES OR POLICY DRIVERS THAT SHAPE OUR RESEARCH PRIORITIES

1. Smart specialization
2. Ageing
3. Demographic
4. Infrastructure
5. Environment protection

A TOUGH NUT TO CRACK

Waste management in Zagreb as a multidisciplinary issue that encompasses technology, health, environment, society and values.



<p>CITY: City of Zagreb POPULATION: 807 254 (2019) CITY KNOWN FOR: financial, IT, chemical, food industry.</p>	<p>WHAT ARE THE MOST PRESSING ISSUES FACING YOUR CITY OR REGION?</p> <ol style="list-style-type: none"> 1. Post-earthquake City reconstruction 2. Establishment of sustainable and circular waste management 3. Change the car-oriented transport distribution 4. Regeneration of a large number of brownfield sites 5. Resilience to climate change, natural hazards and socio-economic crises 	<p>WHAT ARE THE TOP TEN MOST IMPORTANT CHALLENGES YOU WOULD LIKE TO WORK ON THROUGH RESEARCH COLLABORATION. THESE SHOULD BE ALIGNED WITH CITY OR REGIONAL POLICY DOCUMENTS OR STRATEGIES</p> <ol style="list-style-type: none"> 1. Poverty risk (especially 65+) 2. Reintegration of NEETs 3. Lack of affordable housing 4. Sustainable urban mobility 5. Brownfield regeneration 6. Urban renewal of the historic center 7. Sustainable Waste management 8. Green Infrastructure and Nature Based Solutions for prevention of urban floods and heat islands 9. Energy transition 10. Safe and comfortable public spaces for all
<p>WHAT ARE YOUR CITY OR REGIONS KEY COMPEITIVE STRENGHTS?</p> <ol style="list-style-type: none"> 1. Scientific and cultural center 2. Educated and skilled population 3. University of Zagreb 4. Natural and cultural heritage 5. „The door to the Adriatic” – Central European city with Mediterranean vibe 	<p>A TOUGH NUT TO CRACK</p> <p>Urban decay of the historic City center, further devastated by the 2020 earthquakes</p> <p>The city could benefit from sharing experiences and good practices in urban renewal, as well as from sharing governance-legal-design models.</p>	
<p>WHAT RESEARCH NETWORKS, ALLIANCES OR ORGANISATIONAL STRUCTURES DOES YOUR CITY HAVE?</p> <ol style="list-style-type: none"> 1. Eurocities 2. ICLEI - Local Governments for Sustainability 3. Covenant of Mayors 4. EnergyCities 5. CIVINET Slovenia-Croatia-SE Europe Network 		

Appendix E

E.1 The European Declaration of Engaged Research

The European Engaged Research Declaration was signed by University and Municipal leaders from the UNIC Consortium during the UNIC CityLabs Festival in Oulu, Finland on the 15th of June 2022 in the Oulu City Theatre. This event was hosted by the City of Oulu and this event was opened by Päivi Laajala, Mayor of Oulu. The Declaration, a first for Europe, champions ‘Engaged Research, which is an approach that involves local people and communities, NGO’s and Municipalities, working together with universities to collectively decide on what is to be researched and involving societal partners in all stages of the research process. This grassroots-up approach leads the way in bringing Europeans together across different languages and borders, to participate as active members in shaping flourishing, compassionate, enlightened societies, and sustainable economies, informed by the power of research and evidence. The final version of the declaration is as follows.



UNIC European University of Post-Industrial Cities European Declaration of Engaged Research

UNIC: Educating Through Teaching, Research and Community Engagement for Inclusive Societies

We are UNIC, a European alliance of universities and post-industrial cities, whose aim is to develop a new model of European inter-institutional teaching, research and engagement infrastructure that promotes ‘superdiversity’ and interrogates and addresses the challenges facing post-industrial

cities. The uniqueness of our alliance resides in our places, our histories and traditions, our individual and collective experience, and the diverse nature of our cities. The vision of our alliance is that our universities, municipalities & civil society partners will collaborate multilaterally to address urban challenges - collectively shaping learning, research and engagement within and across our cities in an inclusive manner – and serving as a beacon for other non-aligned post-industrial cities. UNIC has a distinct focus on ‘Engaged Research’, which builds upon our strategic advantage as an alliance of research-intensive universities and city partners with experience in collaborating with society to address just and inclusive post-industrial transitions. We believe that active societal engagement in research and innovation, in all its dimensions, allows us to harness the full creativity of our societies to address the great challenges of our time. Indeed, the European Research Area and its ‘Pact for Research and Innovation in Europe’, promotes societal responsibility, that is, research & innovation co-created with societal partners, towards strengthening common values, trust and ownership of research.

DECLARATION ON ENGAGED RESEARCH

The first such Declaration in Europe, the document gives expression to a set of underlying values, principles and commitments co-created with delegates from the UNIC European University of Post Industrial Transitions. Students, staff, municipalities and civil society partners attended an Engaged Research Strategy Forum online in January 18th and 19th 2022 and a plenary in University College Cork, Ireland, from March 30th to April 1st 2022. A signing ceremony, involving university, municipality and civil society delegates, took place in Oulu, Finland on June 15th 2022. This Declaration indicates and makes highly visible our collective commitment to Engaged Research.

DEFINITION & VALUES

Engaged Research is an overarching term that describes a wide range of comprehensive research approaches and methodologies that share a common interest in collaborative engagement ‘with’ and ‘within’ society. Fundamentally committed to academic freedom and the public good, Engaged Research aims to improve, understand, or investigate issues of public interest where societal partners are active collaborative participants in the research process. It nurtures democratic competencies through participation - from defining research need, to the co-creation of knowledge and equitable and reciprocal knowledge translation to and with society. Committed to sustainability, and inherently transdisciplinary, it explicitly builds awareness of the interconnectedness of our social-ecological systems. Imbued with different knowledge traditions (expertise, practice, experience and wisdom), it is manifestly impactful research that has an emancipatory and transformative social justice orientation - consistently pursuing intersectional understanding towards greater social solidarity, diversity, inclusion and equity.

PRINCIPLES AND COMMITMENTS

DEMOCRATIC PURPOSE

We recognise the civic and democratic purpose of societal engagement and participation as integral to the mission of our respective institutions, municipalities and organisations. We believe that universities and cities can model and lead a new agile paradigm of democratic research engagement with the world. We believe that research, now more than ever, requires its application and endeavour to be rooted in the social and the ethical, needing a paradigm shift, so that it may assist with best effect for all in the collaborative solving of the societal challenges of our times. In our collective strategies and plans, wherever possible, we commit to promoting societal engagement, recognising that research mobility and collaboration across our universities and cities has this resolutely democratic purpose.

CARING FOR ALL PEOPLE

We are committed to fostering equitable and agentic communities where all people are encouraged to participate as active members engaged in the shaping of flourishing, compassionate, enlightened societies and sustainable economies, informed by the power of research and evidence. Our responsibility is to developing people as ‘life-wide’ cooperative makers of the democratic communities in which they live and work. We will co-operate in advancing the truly emancipatory potential of research with and within society and for all of life. We will demonstrate agile and courageous leadership in promoting ‘Engaged Research’ within our local and national societies and systems, providing a unifying voice in Europe and beyond for research that is participatory, responsible, and impactful and that advances open research, promotes diversity & inclusion, and that makes a difference in people’s lives.

CARING FOR PLACE

Place is vital to the human experience and our sense of well-being, especially as we reimagine our urban environments for the benefit of future generations. For us, research and innovation are not something apart or separate from society but are an integral and vital part of the life of our communities. We thus recognise the importance of ‘emplacing’ research in local contexts through deep engagement with stakeholders over time. We will contribute to the resilience and renaissance of Europe’s post- industrial cities, regions and communities through actively prioritising and addressing urban challenges. We will develop integrated university-city Engaged Research & Innovation platforms and consensually agreed roadmaps, underpinned with a common understanding of Engaged Research, a strategy, supportive systems and a common engagement interface to realise the collaborative involvement of civil society, public & city partners, university students and staff in Engaged Research initiatives.

CARING FOR OUR PLANET

We believe that research plays a significant role in addressing almost all of the grand challenges we face as a global community, from the climate crisis – the greatest threat we face, an existential threat – to the related issues of environmental degradation and biodiversity loss, global north and south disparity, health and wellbeing, systemic inequity and inequality, among others. We therefore urgently need to accelerate societal empowerment, and interdisciplinary and transdisciplinary connections between economy, society, ecology and culture, this cannot be postponed. We will therefore support the development of climate neutral, smart and ultimately ‘wise’ cities, prioritising Engaged

Research as an important basis for a broader and potentially emancipatory understanding of the interconnectedness of our social-ecological systems.

Recognising the above definition, values, principles and commitments, and encouraged by a spirit of common democratic purpose, and an agile ambition to care for people, place and planet we sign this Declaration on Engaged Research:

UNIC is an alliance of the following partners: Belgium Université de Liège, City of Liège; Croatia Sveučilište u Zagrebu, City of Zagreb; Finland Oulun Yliopisto, City of Oulu; Germany Ruhr-Universität Bochum, City of Bochum; Ireland Coláiste na hOllscoile Corcaigh, City of Cork; Spain Universidad de Deusto, City of Bilbao; The Netherlands Erasmus Universiteit Rotterdam, City of Rotterdam; Turkey Koç Üniversitesi, City of Istanbul. This is not a legally binding document. Signatories include University Rectors and Student Leaders, City Leaders and City Partners.