

# Understanding Rotterdam



Mark van Ostaijen  
Marcel de la Haye  
Tackling Inequalities  
09-02-2022



# Rotterdam

- The case of Rotterdam
- *How to understand this city in tackling its inequalities?*



NIET  
LULLEN  
MAAR  
POETSEN



GEEN  
WOORDEN  
MAAR DADEN

MULTIEN



# Rotterdam

---

- The case of Rotterdam
- *How to compare this city?*



# 1) Post-industrial legacy





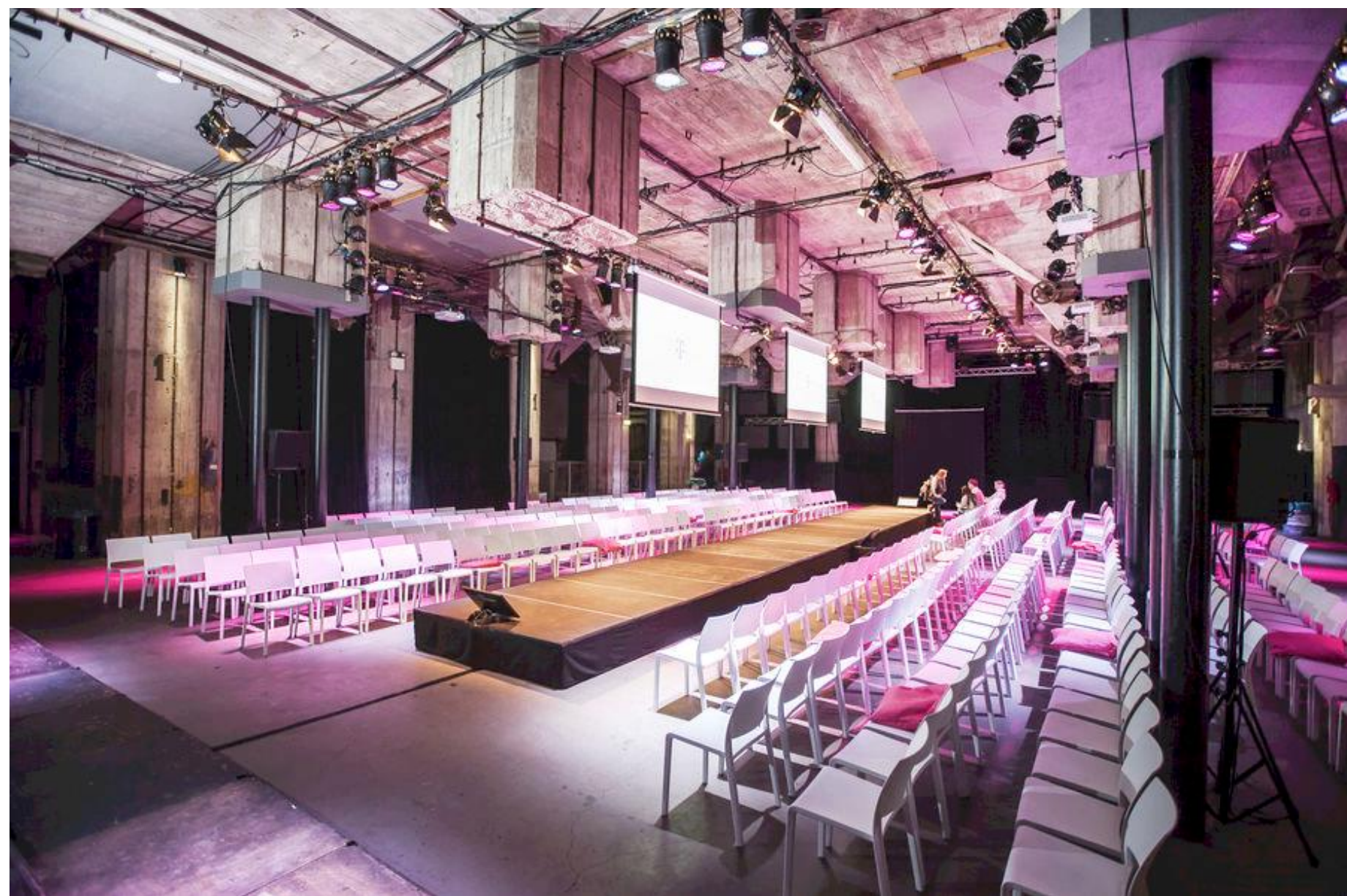
Ingrid Gould Ellen  
Edward L. Glaeser  
Eric A. Hanushek  
Matthew E. Kahn  
Aaron M. Renn

# THE NEXT URBAN RENAISSANCE

How Public-Policy Innovation  
and Evaluation Can Improve Life  
in America's Cities



MANHATTAN INSTITUTE  
FOR POLICY RESEARCH

The book cover features a red line-art map of a city grid on a white background. A blue circle in the top right corner contains the authors' names: Ingrid Gould Ellen, Edward L. Glaeser, Eric A. Hanushek, Matthew E. Kahn, and Aaron M. Renn. The title "THE NEXT URBAN RENAISSANCE" is written in large, bold, white letters across a blue horizontal band. Below the title, the subtitle "How Public-Policy Innovation and Evaluation Can Improve Life in America's Cities" is written in smaller white text. At the bottom right, the logo for the Manhattan Institute for Policy Research (MI) is displayed, consisting of the letters "M" and "I" in white on a black background, with the full name of the institute below it.

Ingrid Gould Ellen  
Edward L. Glaeser  
Eric A. Hanushek  
Matthew E. Kahn  
Aaron M. Renn

# THE NEXT URBAN RENAISSANCE

How Public-Policy Innovation  
and Evaluation Can Improve Life  
in America's Cities

**MI**  
MANHATTAN INSTITUTE  
FOR POLICY RESEARCH



Ingrid Gould Ellen  
Edward L. Glaeser  
Eric A. Hanushek  
Matthew E. Kahn  
Aaron M. Renn



NEXT

# URBAN RENAISSANCE

How Public-Policy Innovation and Evaluation Can Improve Life in America's Cities

**MI**  
MANHATTAN INSTITUTE  
FOR POLICY RESEARCH



Ingrid Gould Ellen  
Edward L. Glaeser  
Eric A. Hanushek  
Matthew E. Kahn  
Aaron M. Renn

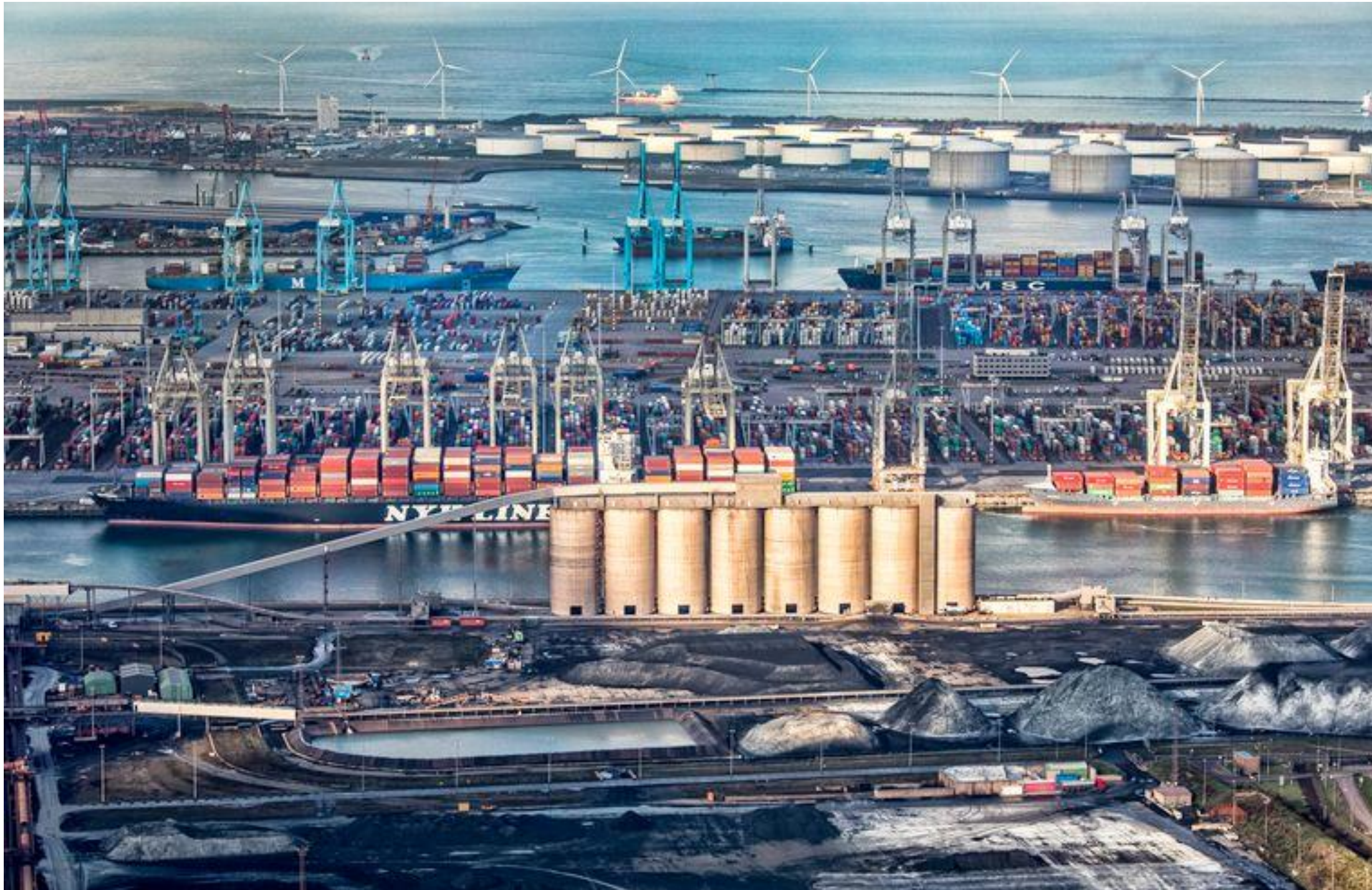
# THE NEXT URBAN RENAISSANCE

How Public-Policy Innovation  
and Evaluation Can Improve Life  
in America's Cities

**MI**  
MANHATTAN INSTITUTE  
FOR POLICY RESEARCH



# 1) Post-industrial legacy



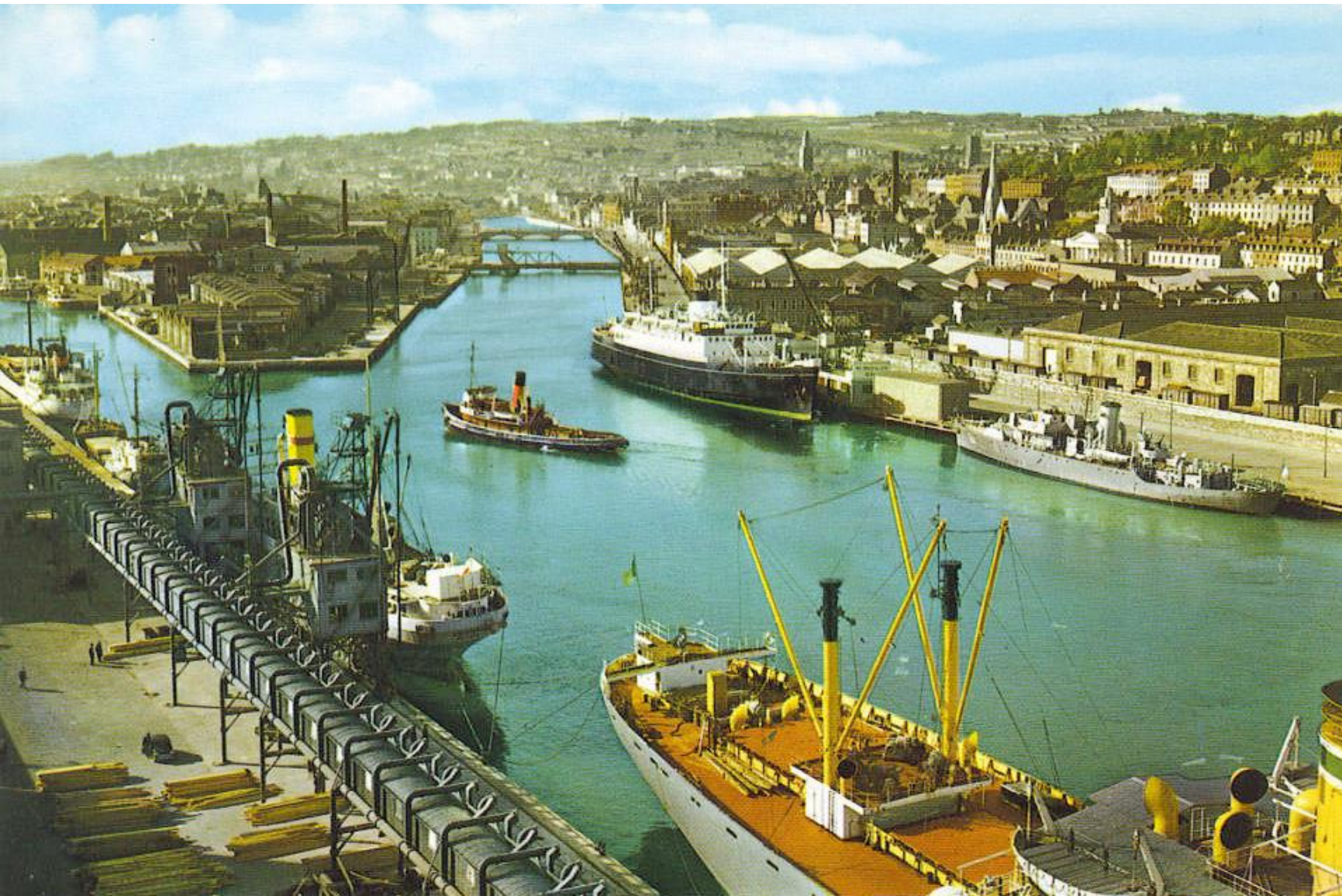
# 1) Post-industrial legacy

- Post-industrial cities are unique facing challenges from a modern industrial site of labour and capital to socially, culturally and economically transforming into new economies of the future



# 1) Post-industrial legacy

- Post-industrial cities are unique facing challenges from a modern industrial site of labour and capital to socially, culturally and economically transforming into new economies of the future



# 1) Post-industrial legacy

- Post-industrial cities are unique facing challenges from a modern industrial site of labour and capital to socially, culturally and economically transforming into new economies of the future



 **BLEGNY MINE**  
UNESCO SITE IN LIEGE, BELGIUM



# 1) Post-industrial legacy

- Post-industrial cities are unique facing challenges from a modern industrial site of labour and capital to socially, culturally and economically transforming into new economies of the future



# 1) Post-industrial legacy

- Post-industrial cities are unique facing challenges from a modern industrial site of labour and capital to socially, culturally and economically transforming into new economies of the future



# 1) Post-industrial legacy

- Post-industrial cities are unique facing challenges from a modern industrial site of labour and capital to socially, culturally and economically transforming into new economies of the future

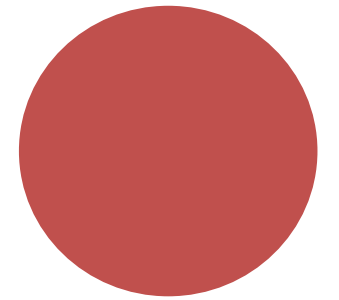


## 1) Post-industrial

*Cities in transition | Transforming Cities |  
Transforming Identities*

*The concept post-industrial cities captures a variety of urban transitions that come with the shift from a manufacturing-based economy to a service and knowledge-based economy, also connected with the subsequent societal restructuring of these cities (Bell, 1973). This includes postindustrial transitions as:*

- The shift from blue-collar manual labour to the technical and professional work;*
- The shift from practical knowledge to theoretical knowledge;*
- The development of new scientific disciplines;*
- A stronger emphasis on universities and polytechnic institutes*
- A uniquely diverse milieu in socio-economic and socio-cultural terms, also connected to the migratory past of post-industrial cities*



**TRANSFORMATION STRATEGIES  
FOR FORMER INDUSTRIAL CITIES**

Nathalie von Roon and Hans-Martin Weis (eds.)  
NA Publishers

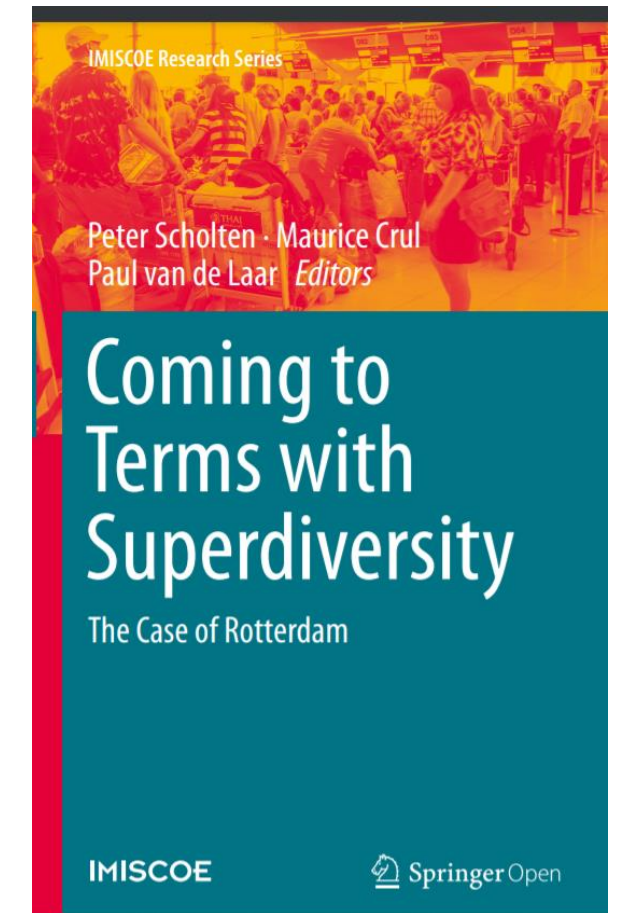
ENGINEER  
MARKETING  
LAW  
HISTORICAL  
TANTRIC  
FBI USA  
CINEMATIC  
LAW  
PAST  
CONCRETE  
ENERGY  
TELETYPE



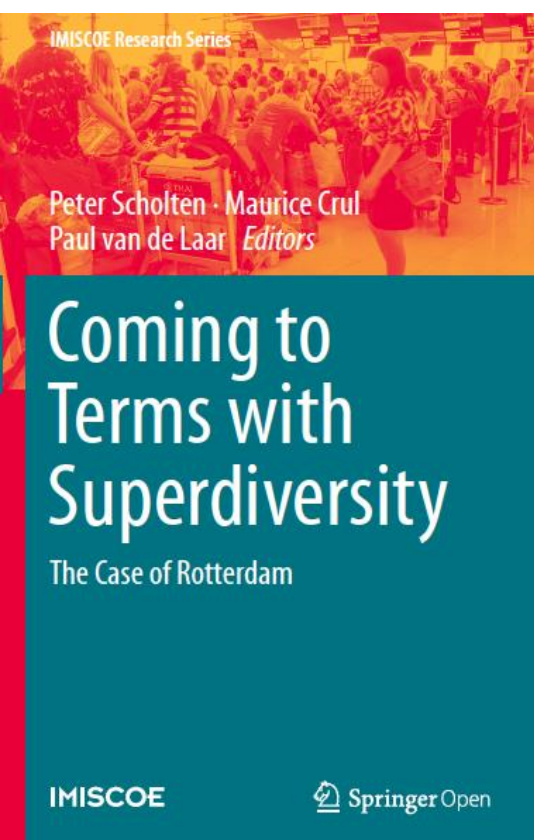
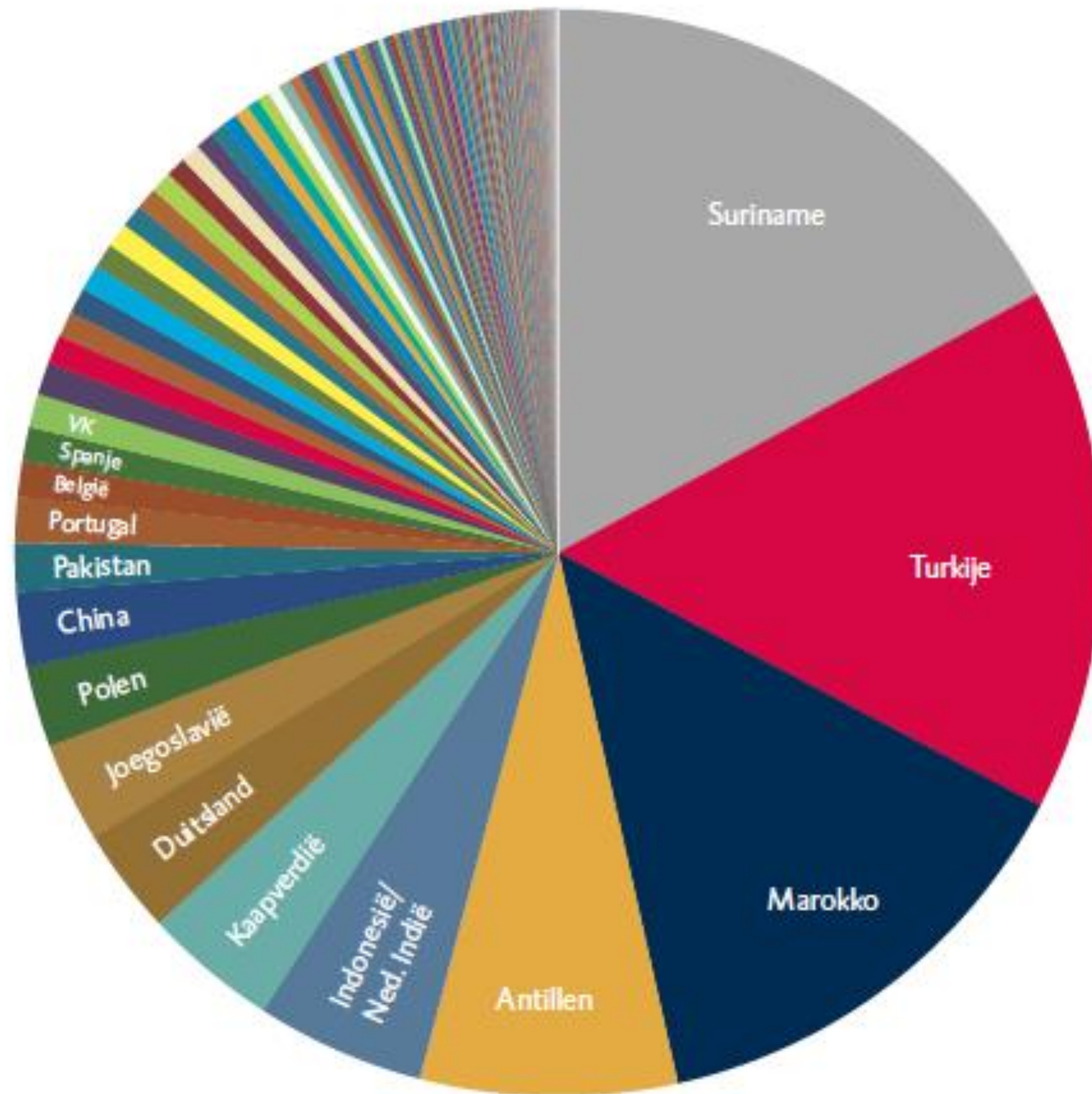


## 2) Migration related diversity

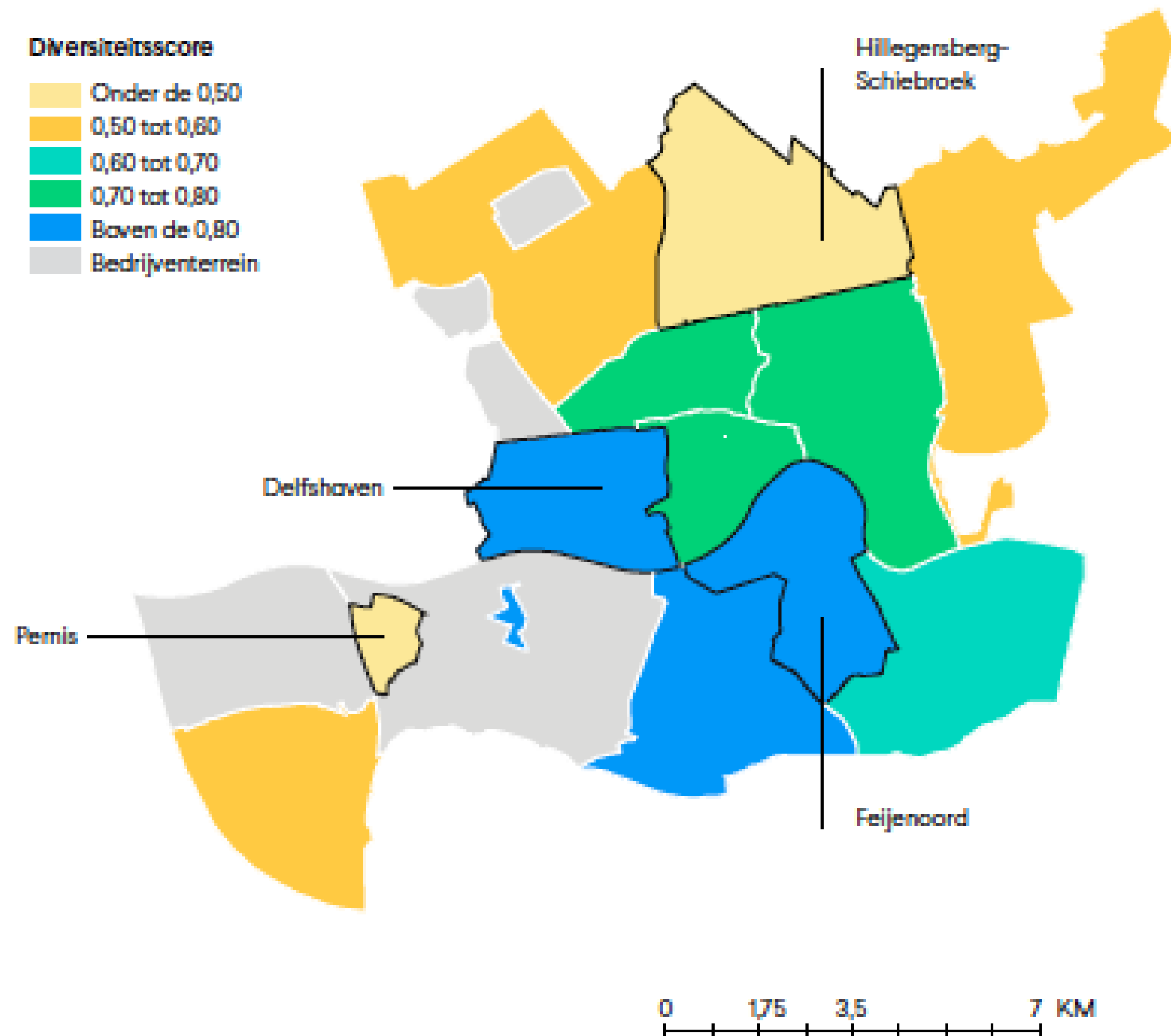
- Post-industrial cities traditionally attracted external workforces to fulfil the labour market demands of local industries (mining, harbour, textile industries)
- This created unique demographics social-economically as well as culturally highly diverse populations
- This social complexity is manifested in the growing prominence of complex mixtures (and intersectionalities) of ethnicity, race, gender, sexuality, culture, religion, social status, economic status, legal status, and lifestyles: **superdiversity**



## 2) Migration related (super)diversity: Rotterdam



## 2) Migration related (super)diversity: Rotterdam



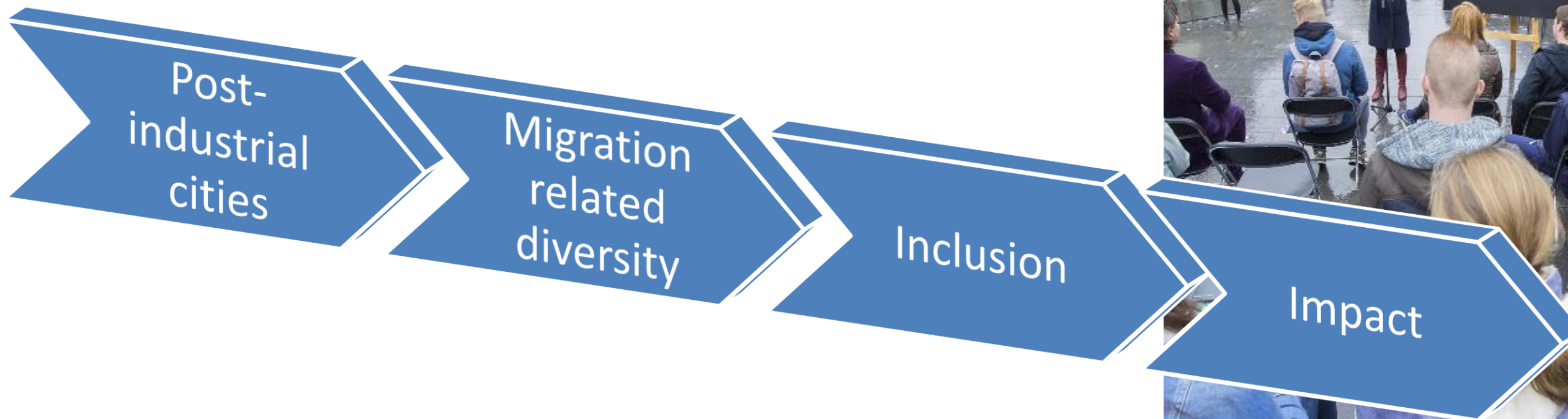
### 3) Inclusion

- Universities, and public institutions at large in post-industrial cities, fulfil a crucial role in the emancipation and inclusion of this diverse urban population
- Non-traditional students
- First generation students



## 4) Impact

- Therefore it is important for public institutions to take the lead, universities to collaborate with public stakeholders, policymaking, politics and civil organisations to create impact





# European University of Post-Industrial Cities (UNIC)

[www.unic.eu](http://www.unic.eu)



//01

Co-funded by the  
Erasmus+ Programme  
of the European Union





*Erasmus*

# European University of Post-Industrial Cities (UNIC)





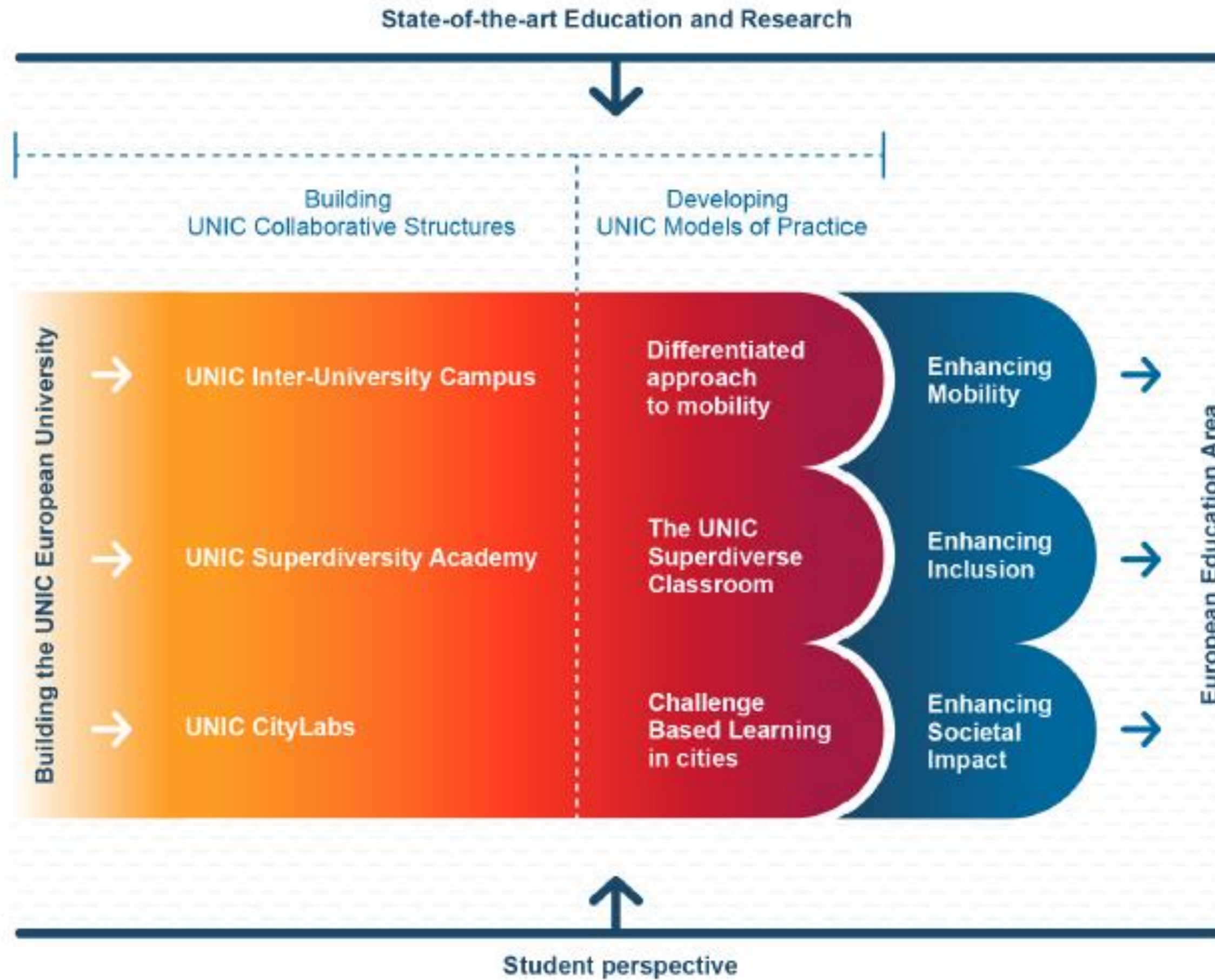
# European University of Post-Industrial Cities (UNIC)



An alliance of 8 post-industrial universities covers:

- 224 778 students
- over 8000 PhD students
- 30 669 staff
- 27 associates (17 public organizations, 10 NGOs)





# What are UNIC CityLabs?



**brings diverse people together**  
students, researchers, city stakeholders, organizations and citizens



**creative solutions implemented locally**  
drives societal change



**events of many shapes and sizes**  
workshops, hackathons, panel discussions, interviews, courses...

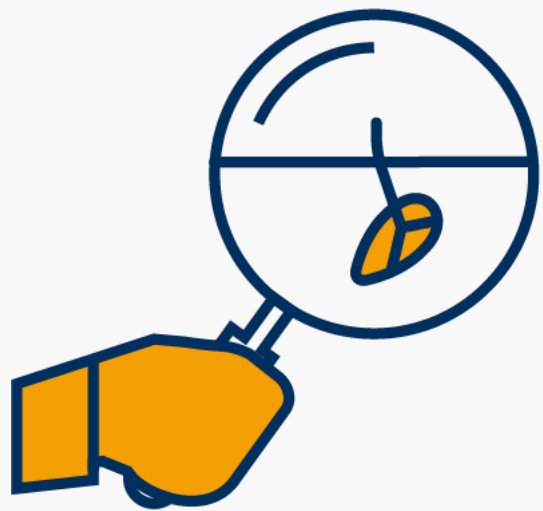


**harnesses “brain power” across Europe**  
insights, ideas and best practices

**collaborative problem solving**  
diversity widens perspectives and boosts creativity



# Transcending knowledge in UNIC CityLabs



**1) Identifying challenges**  
*Local Pop-Up CityLabs*



**2) co-creating solutions**  
*Virtual CityLabs*



**3) exchanging ideas**  
*CityLab Festivals*



# UNIC CityLabs challenges

## How to:

1. Ensure connection and input from different stakeholders, on beforehand
2. Co-create knowledge with different stakeholders *beyond* therapeutic value
3. Generate outcomes and outputs that are *scientific and societal* meaningful

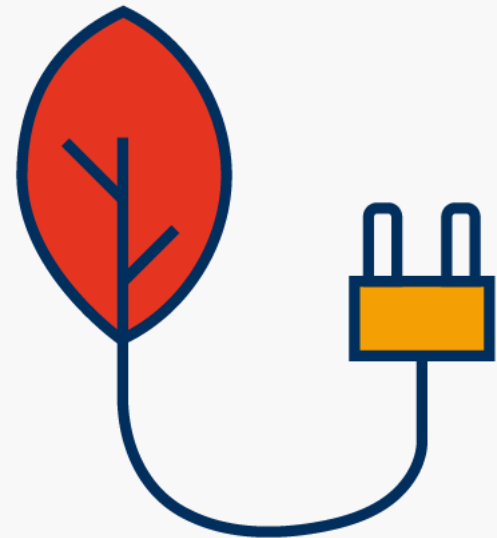


# UNIC CityLabs' themes

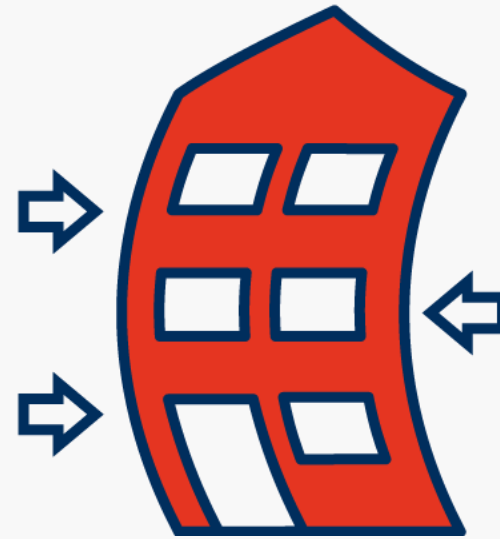
Diversity and inclusion



Green cities, sustainability



Urban resilience & transformation



Digital transition



Aging population





# UNIC Pop-up CityLabs in Rotterdam



Learn more...

<https://www.youtube.com/watch?v=oud6i6AzPm8>



[www.unic.eu](http://www.unic.eu)

[vanostaijen@essb.eur.nl](mailto:vanostaijen@essb.eur.nl)

@MvOstaijen



CITYLABS



